

# LIMES NORRLANDICUS

1:10 000 000

- Område över högsta kustlinjen
- Område under högsta kustlinjen
- Limes norrlandicus
- Sydgräns för fäbodväsendet
- Nordgräns för
- medeltida städer
- högmosar
- runinskrifter
- ekens *Quercus robur* utbredning



# IPS Sweden Post-Convention Excursion

12.-17. June 2025

## Mires and peatlands in Väster- and Norrbotten County/Northern Sweden

(incl. cultural and historical developments of the area over time)

Number of participants: 8-24

Costs: ca. 1100 EUR



**TORV**  
Forsk

  
**SLU**  
Swedish University of  
Agricultural Sciences

	Thursday, 12.6.	Friday, 13.6.	Saturday, 14.6.	Sunday, 15.6.	Monday, 16.6.	Tuesday, 17.6.	
07:00-08:00	Gysinge	Degerö Stormyr					
08:00-09:00							
09:00-10:00				LKAB iron-ore mine	Naturum		
10:00-11:00				Kiruna town hall with lunch	Chairlift to Aurora Sky Station; mountain lunch	Abisko-Stordalen Palsa Bog ICOS Ecosystem Station	Departure and travel to Kiruna airport or own travelling
11:00-12:00							
12:00-13:00	Lunch						
13:00-14:00	Travel by train from Gävle to Umeå (ca. 5 h)	Travel by train from Umeå to Kiruna (ca. 7,5 h)	Travelling to Abisko Turiststation (ca. 1,5 h)	Own time for hiking in the Abisko National Park; or sauna at Torneträsk; or car tour to fjord-landscape around Narvik/Norway	Guided peatland tour Abisko NP		
14:00-15:00			Installation at Abisko Turiststation/Freetime				
15:00-16:00			Walk around the Abisko canyon				
16:00-17:00							
17:00-18:00							
18:00-19:00							
19:00-20:00						Dinner in Sami hut	
20:00-21:00	Hotel in Umeå				Dinner Turiststation		
21:00-22:00		Hotel in Kiruna					
22:00-23:00							

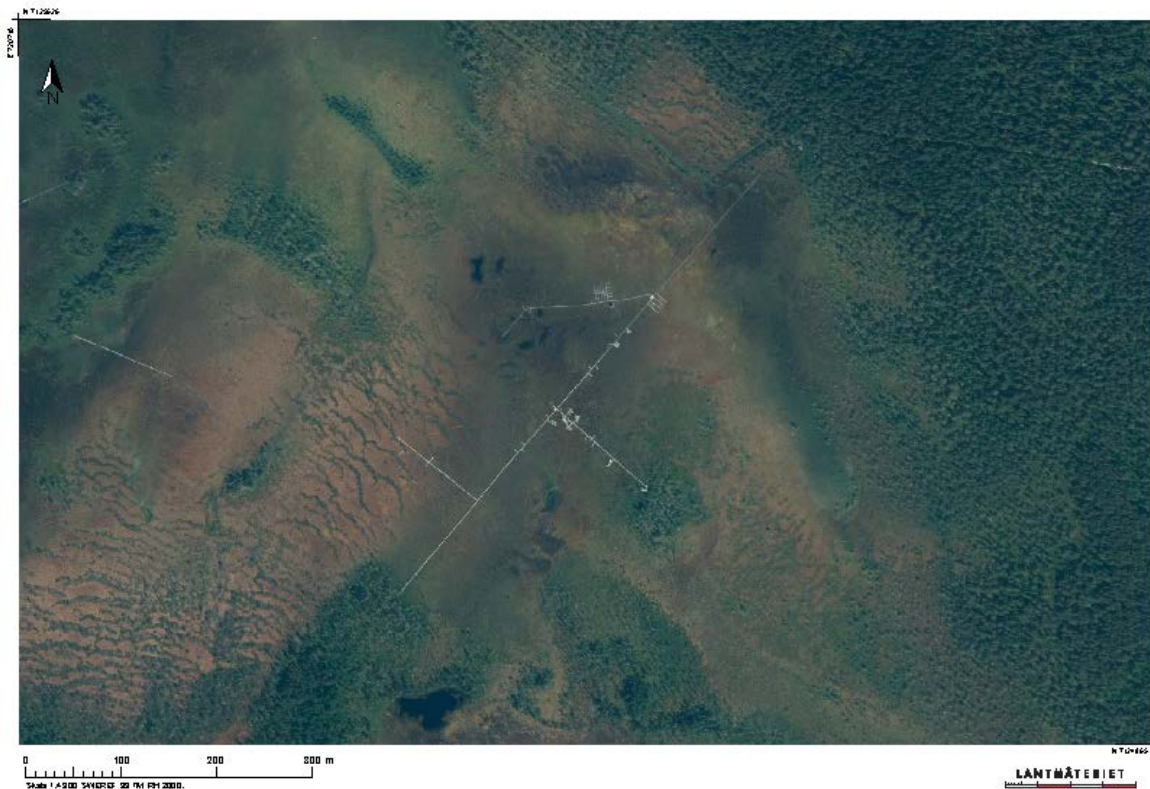


**Friday, 13.6.**

Visit **Degerö Stormyr (mire)** and **Degerö ICOS station** (64°11'N, 19°33'E, 270 m asl)

botanical, hydrological and mire development investigations started in 1909

ICOS Ecosystem station in operation since 2013



**Saturday, 14.6.**

LKAB iron-ore mine

Kiruna town hall

Travelling to Abisko Turiststation

walk around the Abisko canyon

Dinner in a Sami hut



**Sunday, 15.6.**

Naturum (a visitor and information centre where visitors can learn about the geology, flora, fauna and cultural history of the local area)

chairlift to Aurora Sky Station; mountain lunch

own time

(e.g. hiking in the Abisko National Park; or sauna at Torneträsk; or car tour to the fjord-landscape around Narvik/Norway)



**Monday, 16.6.**

Abisko-Stordalen Palsa Bog ICOS Ecosystem Station  
(lecture, lunch, field visit)

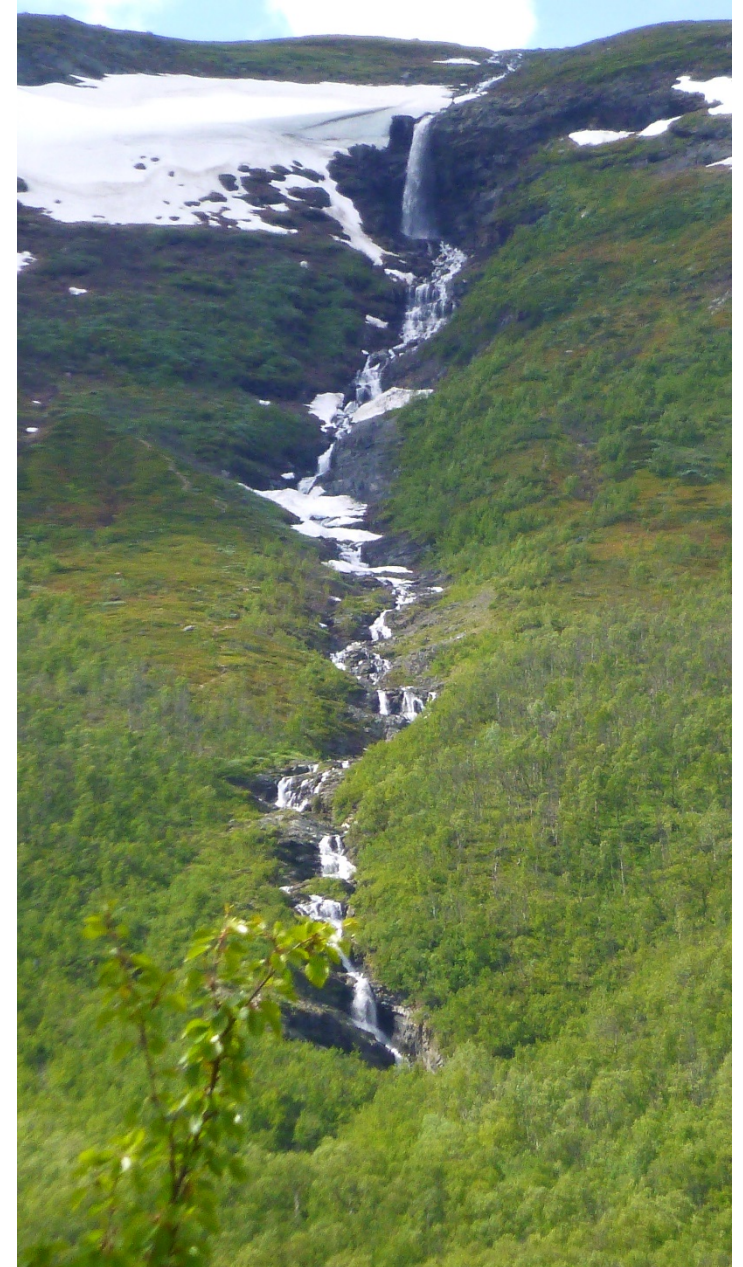
Peat depth 1-3 m; permafrost at depths from 0.5-1 m

guided peatland tour Abisko NP

Dinner at Abisko Turiststation



Photos Christian Stiegler



**Tuesday, 17.6.**

departure and travel to Kiruna airport or own travelling



[sabine.jordan@peatlands.org](mailto:sabine.jordan@peatlands.org)

