



# Annual Report 2025



# Annual Report 2025

## President's Foreword

**O**n behalf of the Executive Board, I am pleased to present the IPS Annual Report for 2025. The year was marked by a high level of activity and engagement, reflecting the ever-growing relevance of peatlands in environmental, economic and societal discussions at both national and international levels.

Throughout the year, the IPS continued to serve as a neutral, science-based platform bringing together researchers, practitioners, industry representatives, policymakers and other stakeholders. This work relied on the active involvement of IPS members, National Committees (NCs), Commissions and partners, whose expertise and voluntary commitment remain essential to the Society.

We also sincerely appreciate the financial support of our members, without which our work would not be possible. However, additional funding as originally budgeted would have enabled more extensive participation in international conventions and even more substantial tangible outcomes.

I would like to thank the members of the Executive Board and the Scientific Advisory Board (SAB) for their commitment and guidance and the National Committees for their local activities, as well as the Managing Director for their dedication and professionalism in coordinating IPS activities during a demanding year.

Together, these efforts ensure that the IPS remains a credible and constructive voice in the global peatland arena.

*Hannu Salo*

President  
hannu.salo (at) peatlands.org



President Hannu Salo opening the IPS Business Meeting at the Baltic Peat Producers Forum 2025 in Riga. Photo: Susann Warnecke



# Managing Director's Review

The year 2025, under the theme “Peatlands for Economy, Environment and Society”, was characterised by renewal and increased activity for the IPS, with a high level of operational work throughout the year. Building on the foundations laid in 2024, the IPS continued to implement its four-year strategy, with a clear focus on delivery.

Overall, the Society operated in a complex global policy environment with rising expectations for peat and peatland expertise. Nevertheless, the IPS remained firmly committed to its core mission of providing unbiased, science-based information and facilitating dialogue between all stakeholders.

Several concrete developments shaped the year. The IPS expanded its webinar series, which developed into an important and widely used channel for scientific exchange, policy discussion and professional interaction among members.

The IPS also significantly increased its contributions to external policy and strategy processes by providing comments on a wide range of draft policy documents at national, European and global levels, guided by the Scientific Advisory Board. Through this work, the IPS ensured that

peatland-specific expertise, practical experience and data-based perspectives were reflected in emerging regulatory and guidance frameworks.

A major highlight of the year was the IPS Annual Convention in Gysinge, Sweden, in June, which brought together approximately 80 participants from a broad range of professional backgrounds, sectors and countries.

The IPS further strengthened its visibility through active involvement in international conventions. This included participation in the United Nations Framework Convention on Climate Change (UNFCCC) Conference of the Parties (COP30) and Ramsar Wetland Convention COP15, a meeting with UNFCCC and Intergovernmental Panel on Climate Change (IPCC) representatives and continued contributions to the EU Horizon 2020 Mainstreaming Ecological Restoration of freshwater-related ecosystems in a Landscape context: INnovation, upscaling and transformation (MERLIN) project.

Co-organisation of international scientific events such as AsiaFlux 2025 and the joint IPS-International Society for Horticultural Science (ISHS) Growing Media conference in Freising,



Participants of the Annual Assembly 2025 in Gysinge, Sweden. Photo: Hein Boon

Germany, further underlined the IPS's role as a trusted partner linking science and practice. The IPS also held a successful policy event at the Baltic Peat Producers Forum in Riga in September.

Operationally, 2025 saw important improvements in internal processes and services. The formal establishment of the Managing Director role, previously titled Secretary General, clarified responsibilities for administration, finances, events and communications. At the same time, the elected Presidents continued to provide strategic and scientific leadership.

In addition, the IPS online shop was updated and expanded. All books available in multiple copies can now be purchased through the online shop, in print and, where available, in PDF format. IPS publications, newsletters and social media

channels were actively and consistently used to communicate with members and external audiences.

All of this work was made possible through the strong commitment of IPS members, volunteers and partner organisations. Their expertise, time and engagement remain central to the IPS's ability to function as a credible, science-based and inclusive international association dedicated to the wise use and responsible management of peatlands.

*Susann Warnecke*

Managing Director  
susann.warnecke (at) peatlands.org

## Report of the Executive Board

### Strategy Implementation

Implementation of the IPS Strategy 2024-2028 continued during 2025. This included stronger communication, closer stakeholder involvement and improved coordination between the Executive Board, Scientific Advisory Board and Commissions, and National Committees.

Across all strategic goals, the IPS focused on turning objectives into concrete activities and outputs.

These included the continued organisation of scientific and professional events, regular publication output, structured involvement in international conventions, participation in international projects whenever possible and strengthened cooperation with partner organisations.

Updates were provided to members through Peatland

Snippets, Peatlands International, social media and two meetings between National Committee Chairs and Secretaries, as well as the Annual Assembly in Sweden in June.

Where needed, priorities were adjusted in response to available resources and external developments.



Executive Board members in Helsinki in December 2025. Photo: Susann Warnecke



Happy scientists and professionals after the last session of the Gysinge conference. Photo: Susann Warnecke

## IPS Annual Convention in Gysinge

The IPS Annual Convention “Peatlands for Environment, Economy and Society” was held from 9 to 12 June 2025 in Gysinge, Sweden, and followed by a post-convention excursion to northern Sweden. The venue was fittingly located along the Dalälven River, a nature reserve and Natura 2000 site with a long history of interaction between land use, industry and forest as well as peatland landscapes.

The Convention attracted approximately 80 registered participants from a wide range of professional backgrounds, including researchers, consultants and students, as well as representatives from public authorities, non-governmental organisations and industry. Delegates came from numerous countries, including Australia, reflecting the international character of the Society. The programme featured six keynote speakers from government, academia and industry, as well as a wide variety of oral and poster presentations.

In total, the scientific series comprised more than 50 presentations. Topics covered environmental, economic and societal aspects of peatlands, including restoration, peatland management, climate change, archaeology, growing media

and agriculture. Dedicated sessions allowed for focused discussion, while excursions provided opportunities to observe peatland management and restoration practices in the field and meet new and old colleagues. Social events, walks and sauna activities contributed to networking and informal exchange.

The Convention once again demonstrated the IPS’s capacity to create constructive dialogue across sectors. Particular value was placed on the opportunity for direct exchange between scientists, practitioners and policymakers.

Discussions were grounded in data and evidence, while recognising regulatory, economic and practical constraints. As a special outcome of the Convention, the IPS established the new Expert Group on Peatlands and Archaeology.

## Other Conferences, Webinars and Meetings

In addition to the Annual Convention, the IPS and its National Committees organised numerous meetings and member-focused events throughout 2025. These activities are documented in the events calendars published on the IPS website, as well as in Peatlands International and in the annexes to this report.

A central component of the year's programme was a series of eight monthly webinars coordinated by the Second Vice President, delivering a strong and diverse programme covering scientific, policy and practical topics relevant to peatlands and peat.

The themes included peatland microclimate and biogeochemical processes, European policy developments, emission factors for tropical peatlands, restoration strategies and renewable energy generation on former extraction sites, as well as visitor engagement with peatland landscapes. The webinars featured IPS members and invited experts from research institutions, public authorities and industry, encouraged direct exchange among participants, and were made available to members for later viewing.

The IPS representatives also participated in meetings linked to ongoing projects and partnerships. These included the EU Horizon 2020 MERLIN project, information exchange with industry associations and coordination talks related to international conventions.

In addition, the IPS also acted as a co-organiser of international scientific events. These included AsiaFlux 2025, organised jointly with partner institutions in Asia, where IPS representatives contributed to scientific exchange on greenhouse gas fluxes and tropical peatland management.

The IPS also co-organised a joint IPS-ISHS conference in Freising, Germany, focusing on growing media for horticulture and bringing together researchers, industry representatives and

policymakers. Reports can be found in Peatlands International.

The IPS also remained actively involved in the corporate sector. A particularly visible involvement in 2025 was at the Baltic Peat Producers Forum, held in Riga, Latvia, which brought together the peat industry and policymakers from across the Baltics and beyond.

The IPS contributed actively through an IPS Business Meeting under the theme "Empowering the Voice of Science for the Wise Use of Peatlands", where the Scientific Advisory Board (SAB) presented its recent activities and achievements, as well as through an exhibition stand showcasing IPS publications.

The 40-person event reinforced the IPS's role as a bridge between science, policy and industry, and once again underlined the need for discussions on responsible peat use, restoration and future regulation.

## International Conventions and Policy Processes

Engagement with international conventions and policy processes remained a central pillar of IPS work in 2025. IPS representatives and observers participated in numerous meetings, consultations and preparatory processes relevant to peatlands and peat.

A major focus of the year was preparation for and participation in UNFCCC COP30, held in November 2025 in Belém, Brazil.

IPS representatives attended COP30 as official observers and contributed to peatland-related discussions through bilateral meetings, side events and informal exchanges.

Particular attention was given to the emerging "Peatland



Executive Board member Asha Hingorani at the IPS Business Meeting in Riga.  
Photo: Hannu Salo

Breakthrough” initiative, which aims to halt peatland loss and significantly scale up restoration by 2030.

IPS contributions emphasised the importance of science-based targets, realistic implementation pathways and balanced approaches. These should consider the roles of landowners, managers, local communities, policymakers and industry. The IPS also highlighted the need for reliable data, as well as transparent reporting and equal consideration of environmental, economic and social aspects.

In parallel, the IPS continued its active involvement in the Ramsar Scientific and Technical Review Panel (STRP), contributing expertise to briefing notes, guidance documents and consultations relevant to wetlands, in particular peatlands, and attendance at COP15 in Zimbabwe.

This participation has been formally extended until 2028 with Dr Line Rochefort as part of the STRP as a scientific expert. These contributions ensure the inclusion of scientific knowledge in policy-relevant guidance at national and international levels.

## Executive Board: Guidance and Leadership

In 2025, the 11-head Executive Board guided the IPS in line with agreed strategic priorities. Its main areas of attention were international visibility, member involvement and operational continuity.

Executive Board meetings during the year included virtual meetings on 14 January and 13 February, a face-to-face one in Riga, Latvia, on 26 March, one held in connection with the IPS Annual Convention in Gysinge on 9 June and further virtual meetings on 2 September and 30 October, followed by a final face-to-face meeting in Helsinki, Finland, on 2 December.

Across its meetings, the Executive Board dealt with a broad range of substantive and organisational topics. These included oversight of IPS participation in international policy development as mentioned above, coordination of IPS input to other consultations, follow-up on project activities and exchanges on externally organised events. Essential support for this work was provided by

Executive Board members Anna-Helena Purre, Lulie Melling and Ilze Ozola at UNFCCC COP30 in Belém, Brazil in November.



the Scientific Advisory Board and its Commissions. Further topics included preparation of Annual Assembly documents, clarification of roles following changes in staffing and volunteering arrangements, membership development and National Committee guidance and ongoing financial monitoring, including future funding needs.

Decisions and key information from these meetings were communicated to members through Peatland Snippets, Peatlands International and social media.

The Executive Board of the International Peatland Society for the 2024-2026 term consisted of:

Hannu Salo, Finland, President  
Ilze Ozola, Latvia, First Vice President  
Anna-Helena Purre, Estonia, Second Vice President

Ordinary members:  
Asha Hingorani, Canada  
Bernd Hofer, Germany  
Sabine Jordan, Sweden



In parallel, the IPS maintained an active presence on social media channels, including LinkedIn, Facebook, Instagram and Bluesky instead of X. These were used to share news, publications and event information, as well as relevant external developments, to reach audiences beyond IPS membership in particular.

The peer-reviewed open-access journal *Mires and Peat*, jointly hosted by the IPS and the International Mire Conservation Group, continued to publish peer-reviewed research.

In summer 2025, *Mires and Peat* launched a new website, improving its accessibility, navigation and presentation of published content.

The IPS encouraged active involvement from its members as authors, reviewers and readers, and will continue financial support as soon as a joint budget is agreed upon.

## Cooperation with Other Organisations

In 2025, the IPS continued cooperation with the United Nations Framework Convention on Climate Change (UNFCCC), the Intergovernmental Panel on Climate Change (IPCC), the Ramsar Convention on Wetlands and its Scientific and Technical Review Panel and the Convention on Biological Diversity (CBD).

It also collaborated with the International Society for Horticultural Science (ISHS), Growing Media Europe, the Global Peatlands Initiative (GPI), Wetlands International, the International Mire Conservation Group (IMCG), the Society for Ecological Restoration (SER) and the International Union of Forest Research Organizations (IUFRO), as well as its National Committees and other related organisations. Additional organisations were followed attentively on social media and via their newsletters.



The Gysinge Convention included a wide variety of interesting presentations on all aspects of peatlands and peat. Photo: Susann Warnecke

## Support for Young Scientists

Supporting early-career researchers and professionals remained an important component of IPS work.

In 2025, three €500 Allan Robertson Grants were awarded following an open call, to:





Excursions completed the programme in Gysinge, here led by Sabine Jordan. Photo: Susann Warnecke

- Rabbirl Mahardika: Soil biogeochemical properties in a small-scale agricultural peatland
- Emily Fearn-Nicol: The role of terminal electron acceptors in peatlands
- Camille Voegeli: Participation in the Growing Media 2025 symposium

In addition to financial support, capacity building was fostered through the webinars, reduced student fees for events and opportunities for young persons to join the IPS at an early stage of their career as junior or student members.

## National Committees and Regional Engagement

The 14 National Committees continued to play a vital role in IPS work. Associations across Europe, Asia and North America organised national and regional events, contributed to international discussions and supported outreach and education on peatlands and peat, as outlined in the annexes and on our website.

Virtual National Committee Round Tables were held in May and November, bringing together NC Chairs and Secretaries and members of the Executive Board, the Scientific Advisory Board and the Secretariat.

The meetings focused on current work, as well as best practices, financial developments, strategic priorities and preparations for the Annual Assembly in Sweden. As intended, these exchanges strengthened internal communication and provided alignment across the Society, especially for those who cannot always travel to meetings.

At the end of 2025, the IPS decided to discontinue the Indonesian National Committee following a prolonged period of inactivity and unresolved membership obligations. The IPS expressed its sincere appreciation for the involvement and contributions of colleagues from Indonesia and warmly invites them to join as individual members at any time.

## Membership Development

On 31 December 2025, the IPS had a total membership of 1,073 members from 37 countries, of which 1,034 members were affiliated through National Committees and 39 were non-NC members.

The IPS remains primarily an organisation of individual members. Of the total membership, 731 were individual members, supported by 192 corporate members, 68 student members, 36 honorary members (both IPS and NCs), 23 research institutes and universities, 16 governmental institutes and seven non-governmental organisations. Overall, total membership declined by 482 members, mostly from the suspended Indonesian National Committee (430).

During 2025, the IPS nevertheless welcomed 74 new individual members and contact persons for corporate members. These new registrations reflected continued interest in IPS activities, in particular webinars, along with international engagement and policy-related work. Details can be found in the appendices.

The IPS continued to rely strongly on the voluntary involvement of its members. These members contributed expertise to webinars, events, consultations and project work, as well as the activities of our local National Committees and Commissions. Their engagement remains essential for the IPS's ability to function as an active, science-based international society.

## Secretariat

The IPS Secretariat ensured the continuity of day-to-day operations throughout 2025 and supported the work of the Executive Board and the Scientific Advisory Board, as well as National Committees, Commissions and members. Core tasks included administration, financial management, coordination of meetings and events, communication, membership administration and support for IPS representation in international processes.

On agreement by the Executive Board, the title of the head of administration was formally changed from Secretary General to Managing Director early in the year. The position has been held by Susann Warnecke since October 2022, and in an acting capacity since March 2021. The elected Presidents continue to provide strategic and scientific leadership, and to hold PR responsibility, while the Managing Director is responsible for the operational tasks of the IPS's headquarters.

In February 2025, IPS Scientific Officer Örjan Berglund returned to full-time academic duties at the Swedish University of Agricultural Sciences. His IPS-related tasks were redistributed within the Society, with support from the Boards and Secretariat.

The Managing Director also supported the organisation of webinars and meetings, edited the IPS's publications and web activities, and ensured information exchange between IPS bodies and members. Much of the Society's substantive scientific and professional content continues to be

generated by members on a voluntary basis, with the Secretariat providing coordination, continuity and administrative support.

In parallel with its core work, the IPS also implemented technical and operational improvements. In 2025, the IPS online shop was refilled and further developed, ensuring the ongoing availability of IPS publications in digital and print formats and supporting outreach as well as income generation. In practice, all IPS books available in multiple copies were made accessible through the online shop, improving access to publications for members and external audiences.

## Honorary Members

Honorary members of the International Peatland Society at the end of 2025 were:

Juhani Päivänen, Finland (Honorary President)  
Gerfried Caspers, Germany  
Donal Clarke, Ireland  
Richard S. Clymo, United Kingdom  
Jean-Yves Daigle, Canada  
Hartmut Falkenberg, Germany

Matti Hilli, Finland  
Gerry Hood, Canada  
Valerijs Kozlovs, Latvia  
Thomas Malterer, United States  
Jack Rieley, United Kingdom

Anne Jelle Schilstra, Netherlands  
Paul Short, Canada



Practical demonstration during an excursion from Gysinge. Photo: AH Purre

Survival of the fittest: Canoe trip in Gysinge in pouring rain. Photo: S. Warnecke



amounted to €185,841 and total expenditure to €174,834.

As in previous years, the IPS's finances were based primarily on membership contributions, complemented by publication and project income and careful use of reserves between quadrennial congress cycles. Overall, the IPS's financial position in 2025 can therefore be considered broadly balanced.

The result was slightly stronger than anticipated due to higher publication-related income, particularly advertisements

and book sales, combined with lower operational expenditure.

Facilities and administrative costs remained below budget overall, and travel expenditure was reduced as in several cases participants covered their own expenses. The IPS contribution to the scientific journal will be recognised in 2026, subject to the finalisation of a jointly agreed budget. Staff and external service costs remained in line with the approved budget.

At year end, the IPS's total assets and liabilities amounted to €313,990. The balance sheet includes a MERLIN project prepayment of €29,254, which

- Jaakko Silpola, Finland
- Ansis Snore, Latvia
- Raimo Sopo, Finland
- Nick van de Griendt, Netherlands

The IPS also remembered colleagues who passed away. Paddy Hughes from Ireland, who had a long background in the peat industry, died in June 2025. The IPS also honoured the memory of Professor Piotr Ilnicki from Poland, who passed away in 2023, and Timo Nyrönen from Finland, a research director from industry and recipient of the IPS Award of Excellence in 2009, who passed in December.

Honorary members from Belarus and Russia remained under suspension in line with the IPS's support for Ukraine.

## Financial and Organisational Resilience

Financial stability remained an important aspect of IPS operations in 2025. The income statement shows a surplus of €11,007, compared to a deficit of €19,638 in the previous financial year. Total income



The Baltic Peat Producers Forum brought again industry stakeholders, policy makers and suppliers to Riga. Photo: Susann Warnecke

will be settled once the project is formally closed in 2026. Several National Committee contributions also remained outstanding at the end of the year; one major contribution was received in January 2026, and the remaining payments are expected to follow in spring 2026.

Bank balances stood at €27,227, while €250,485 had been placed in a short-term investment fund. These funds will provide an important buffer for the coming years, particularly in the period before the 2028 International Peatland Congress. Income from investments will be recognised only when realised, in line with standard accounting practice.

Ensuring stable membership income and diversified funding sources remains an ongoing priority for the Society. In line with this, the Executive Board will continue to seek additional funding opportunities in 2026 to support the IPS's international work and assure financial stability in the medium term.

## Outlook

The IPS will continue its work with a higher level of activity across its core areas. Through sustained involvement with international conventions, delivery of events and publications and ongoing support for its members, the IPS strives to reinforce its role as a credible, balanced and science-based international organisation. A newly elected Executive Board will bring fresh ideas and valuable expertise from June 2026 onwards.

## Thank You

The IPS expresses its sincere thanks to all members, volunteers, staff, event hosts and partner organisations. Your commitment, experience and voluntary contributions underpin the Society's achievements in addressing all environmental, social and economic aspects



Panel discussion at BPPF with IPS representation. Photo: Susann Warnecke

associated with peatlands and peat. Together we are stronger.

## Attachments

- Member Statistics
- Scientific Advisory Board Report
- National Committee Reports
- Key Contacts
- Key Events
- Financial Report
- Auditor's Statement

Approved by the EB on 31 March 2026, and to be approved by the Annual Assembly on 11 June 2026.

Official version in Finnish.



An evening reception was held at Riga Library. Photo: SW

# Member Statistics

	Individual members	Corporate Members	Research Institutes, Universities	Governmental Institutes	NGOs	Honorary Members (NC+IPS)	Students	TOTAL
Germany	303	50	9	14		13	29	418
Finland (Suoseura+Bery)	198	16				9	20	243
The Netherlands	28	8	4			2	4	46
China	38		6					44
Ireland	35	2		1	3	1	2	44
Canada (CSPMA+CSPF)	10	23				3	3	39
Estonia		35				1		36
USA	23	2				3	2	30
Sweden	17	13						30
Latvia	13	5	1	1	2	2		24
Malaysia	20	3						23
United Kingdom	13	4	1			1	2	23
Lithuania		20						20
Ukraine	10	3	1					14
1st January 2026	708	184	22	16	6	36	62	1034
1st January 2025	1177	195	22	17	6	38	61	1516
1st January 2024	1233	196	20	12	6	39	52	1558

	Individual Members	Corporate Members	Students	Honorary Members	NGOs	Research Institutes, Universities	Governmental Institutes	TOTAL
Norway	1	2	3			1		7
Denmark	1	2						3
Poland	2		1					3
Australia	3							3
Belgium	1	1				1		3
France	1	2						3
Hungary	2							2
Spain	2							2
Japan	1							1
Portugal			1					1
Bulgaria	1							1
Chile	1							1
Austria	1							1
Georgia	1							1
Indonesia	1							1
Kenya	1							1
Switzerland				1				1
Italy	1							1
Peru	1							1
Rwanda		1						1
Singapore	1							1
1st January 2026	23	8	6	0	1	1	0	39
1st January 2025	23	9	5	1	0	1	0	39
1st January 2024	19	9	7	1	0	1	0	37

	Jan-26	Jan-25	Jan-24	Jan-23	Jan-22	Jan-21	Jan-20	Balance
NC members	1034	1516	1558	1542	1577	1676	1711	-482
Non-NC members	39	39	37	33	31	37	44	0
	<b>1073</b>	<b>1555</b>	<b>1595</b>	<b>1575</b>	<b>1608</b>	<b>1713</b>	<b>1755</b>	<b>-482</b>



# Report of the Scientific Advisory Board

The Scientific Advisory Board (SAB) of the IPS continued its development throughout 2025, with changes in the SAB and its Expert Group members, as well as the continuation of its everyday activities and participation in numerous consultations.

The SAB meetings in 2025 took place on 9 June in Gysinge, Sweden, and on 31 October online. During these, the following alterations were made to the SAB (the full list of SAB and Expert Group contacts is available in the annexes and here):

- Peatlands and Economy:  
No changes.
- Peatlands and Environment:  
Dr Meng Wang appointed as Second Vice Chair. The Expert Group “Peatland Restoration” Coordinator Dr Pete Whittington was replaced by Dr Stéphanie Boudreau. The Expert Group “Tropical Peatland Round Table” was closed, as the peatland aspects of all climatic zones are covered in other Expert Groups.

- Peatlands and Society:  
Dr Kirsi Lauren was replaced by Dr Ilze Ozola as Coordinator of the Expert Group. The Coordinator of the Expert Group “Peatland Conventions and International Affairs”, Dr Jack Rieley, was replaced by Dr Line Rochefort. A new Expert Group “Peatlands and Archaeology” was created during the Annual Assembly in Gysinge, and Ms Mirjam Briel appointed as its Coordinator.

We thank all the leaving Expert Group coordinators for their work in the SAB, and hope for their continued support and active participation in IPS' activities. We wish the new SAB and Expert Group coordinators energy and enthusiasm to develop peatland science and activities in their areas of study.

The Scientific Advisory Board is actively participating in and supporting the IPS and other peatland-related events and activities aiming at distributing peatland knowledge.

The IPS Annual Convention “Peatlands for Environment, Economy and Society” took place in gorgeous and inspiring Gysinge, Sweden, 9 - 12 June 2025. The event was inspired by the IPS SAB structure. The parallel sessions were also named according to the IPS Expert Groups, with the addition of the new topic “Peatlands and Archaeology, Dendrochronology, Paleo”.

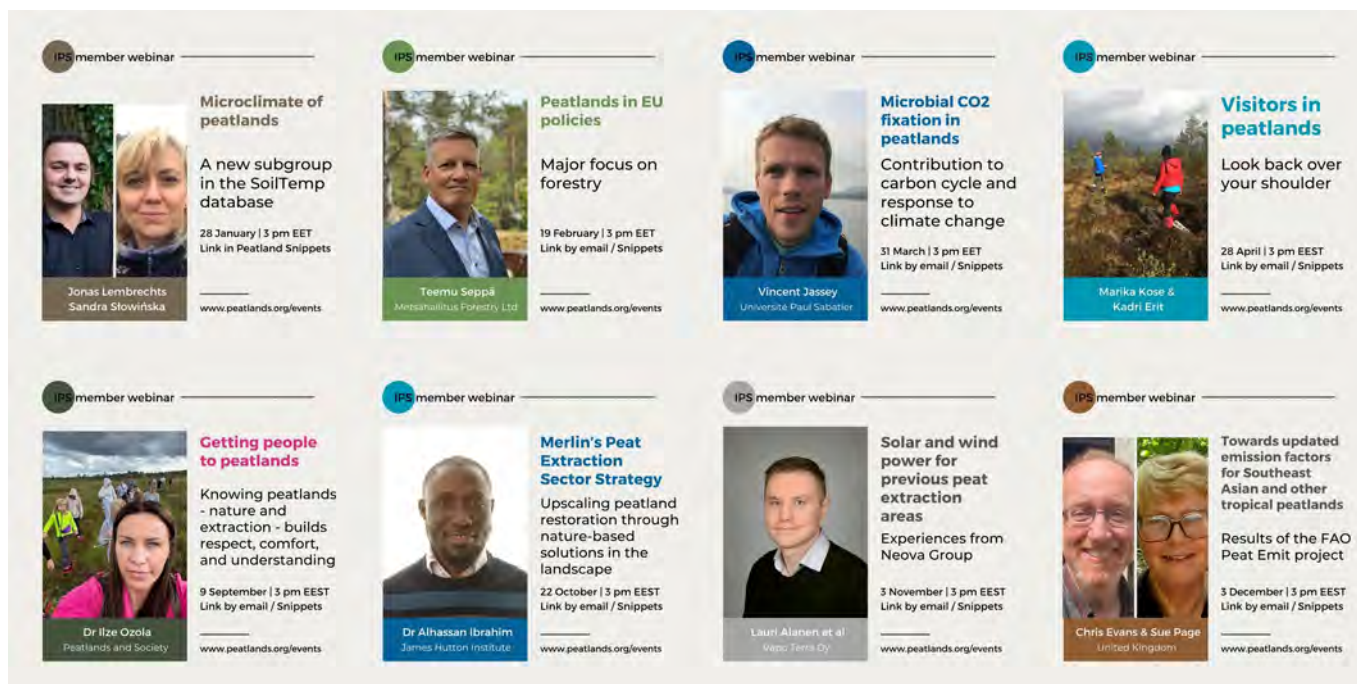
Over three days of scientific sessions, 52 oral and poster presentations were held, introducing peatland matters from all over the world, including one about the first results of IPS data collection. The abstracts have been collected in the Book of Abstracts (Jordan, Berglund, Purre, 2025)<sup>1</sup> available at the IPS online shop.

In 2025, the IPS webinar series continued successfully and regularly throughout the year. Generally, approximately 21 IPS members from different peatland stakeholder groups participate in the webinars in real time, in addition to those using the recordings made available.

The list of webinars in 2025 is provided below.



Dr Purre introducing the work of the SAB to the attendees of the IPS Business Meeting in Riga. Photo: S. Warnecke



Collage of the 2025 IPS member webinar teasers.

- 28 January 2025 Jonas Lembrechts and Sandra Slowinska, “Microclimate of peatlands - a new subgroup in the SoilTemp database”
- 19 February 2025 Teemu Seppä, “Peatlands in EU policies”
- 31 March 2025 Vincent Jassey, “Microbial CO<sub>2</sub> fixation in peatlands: Contribution to carbon cycle and response to climate change”
- 28 April 2025 Marika Kose and Kadri Erit, “Visitors in peatlands - look back over your shoulder”
- 09 September 2025 Ilze Ozola, “Getting people to peatlands”
- 22 October 2025 Alhassan Ibrahim, “Merlin’s Peat Extraction Sector Strategy: Upscaling peatland restoration through nature-based solutions in the landscape”
- 3 November 2025 Lauri Alanen, Ville Kenttämää, Roope Vainio and Kia Anttilainen, “Solar and wind power for previous peat extraction areas, Neova Group”
- 3 December 2025 Chris Evans and Sue Page, “Towards updated emission factors for Southeast Asian and other tropical peatlands: Results of the FAO Peat Emit project”

In addition to those occasions, IPS SAB members have participated in and introduced the IPS and peatland topics at several events such as the annual assemblies and seminars of national committees in Canada (CSPMA Annual Meeting in Montreal, 13 November 2025) and Estonia (Winter

Seminar, 13 March 2025, Tõrve; Annual Assembly 6 November, Rakvere), as well as the Rainforest HEU - Workshop on Transformative Pathways for Peatland Conservation and Restoration (online, 26 May 2025), the 12th International Association for Ecology (INTECOL) Wetlands Conference (29 June - 4 July 2025, Tartu, Estonia), the IPS Business Meeting (Baltic Peat Producers Forum in Riga, Latvia, 16 September 2025) and IVG Branchentag Erden & Substrate (Bad Zwischenahn, Germany, 6 November 2025).

The SAB is committed to introducing peatlands and work done by the IPS to its members and wider public and will also continue participating in such events in the future.

In addition to seminars, the IPS has also been active in Convention work throughout 2025, with the two main directions being the United Nations Framework Convention on Climate Change (UNFCCC) and Ramsar events. In terms of climate-related convention activities, work had already started in 2024 by approaching the UNFCCC and Intergovernmental Panel on Climate Change (IPCC) for discussions about peatland-related emission reporting.

At the beginning of May 2025 in Bonn, Germany, these discussions resulted in a meeting between the IPS delegation (Anna-Helena Purre, Ilze Ozola, Sabine Jordan and Philip Testroet) and

representatives of the IPCC (Sandro Fredericci) and UNFCCC (Vitor Ferreira).

The bottlenecks in peatland-related climate reporting and how to address those were discussed during the meeting. The importance of science-based information was emphasized, and peatland-rich countries were encouraged to make relevant changes in their reporting. Still, for major improvements that would affect several countries, unanimous agreements must be achieved between the reporting countries.

On those topics, it was inspiring to hear the presentation of Dr Kelly Bona at the CSPMA Annual Assembly, about how Canada has improved its wetland category emission reporting methodologies based on the vast and high-quality science performed in Canada so far. This should encourage other peatland-rich nations to carry this work on.

Within the climate activity framework, UNFCCC SB62 (16-26 June 2025, Bonn, Germany) was attended by Philip Testroet and Bernd Hofer. In regard to climate-related activities, one of the most important was the participation of IPS observing representatives (Anna-Helena Purre and Ilze Ozola) at UNFCCC COP30 in Belém, Brazil (10-21 November 2025). During the event, peatlands were discussed during several side events, most importantly the pre-launch of the Peatland Breakthrough initiative.

Throughout the development of this document, the IPS has been an active participant during several consultation rounds. At COP30, an informal meeting with Vitor Ferreira was also held to continue discussions on peatland emission reporting and provide updates on developments after the previous meeting. A more detailed overview about COP30 has been given in Peatlands International 3/2025. The topic of emission reporting was continued after returning from UNFCCC COP30 with the thematic webinar by Sue Page and Chris Evans.

In terms of the Ramsar Convention, significant work has been carried out by Dr Line Rochefort, who has been a member of the Ramsar Scientific and Technical Review Panel (STRP) as a regional expert (2022-2025), and will continue as a scientific expert during the next triennium (2025-



2028). She participated in the 15th meeting of the Conference of the Contracting Parties (COP) of the Convention on Wetlands (23-31 July 2025) in Victoria Falls, Zimbabwe, ensuring that wetland (including peatland) decisions are made in a balanced way based on scientific evidence.

Dr Rochefort and Bernd Hofer (as an observer) also attended the 28th meeting of the Scientific and Technical Review Panel (STRP28) of the Ramsar Convention on Wetlands in Gland, Switzerland (24-27 November 2025). During these events, STRP documents such as technical reports and other materials were discussed. Policy briefs and briefing notes prepared by the STRP make these technical reports available to a broader audience. In 2025, Ramsar publications included topics such as the Global Wetland Outlook, as well as area-based conservation measures and topics relating to wetlands, sustainable food systems and agriculture.

In addition to these convention-related efforts, the IPS Scientific Advisory Board has participated in several consultations about responsibly managed peatlands (Veriflora; SCS-003 Draft 2.0), as well as the Wetlands International Expert Workshop on the Impact of Commodity Production on

Wetlands, European Regional Consultation Towards United Nations Environment Assembly (UNEA)-7 Ministerial Declaration Zero Draft and the UNEA-7 presidential declaration consultation, and European Commission consultations on “Draft elements for an EU certification methodology on carbon removals and soil emission reductions through carbon farming under the CRCF Regulation - Type of activity: peatland rewetting and restoration”.

The consultations regarding the Peatland Breakthrough organised by the Global Peatlands Initiative (GPI) took place with several rounds and meetings between May and September 2025. Meetings were actively participated in and comments submitted to this consultation by many members of the SAB and Expert Groups. The pre-launch of Peatland Breakthrough was also attended by members of the IPS present at UNFCCC COP30.

During 2025, the IPS supported the following initiatives: the signing of the INTECOL wetlands declaration second resolution, “Resolution to Promote the Discipline of Wetland Science and the Importance of Science and Facts”, and the letter “Urging Global Climate Leaders to Prioritize Wetlands Ahead of COP30” (organised by the Environmental Justice Foundation), as well as sending an unofficial supporting letter to the GPI for a unified global definition of peatlands.

As during previous years, work continued with the Mainstreaming Ecological Restoration of freshwater-related ecosystems in a Landscape context: INnovation, upscaling and transformation (MERLIN) project. In 2025, the following MERLIN publications were published:

Ibrahim, A., Blackstock, K., Rieley, J., Purre, A. and Berglund, Ö. (2025). Peat Extraction Sector Strategy: Upscaling Peatland Restoration Through Nature-Based Solutions in the Landscape. MERLIN Project.

Chen, J., Blackstock, K., Ibrahim, A., Scholl, L., Ilgeroth-Hiadzi, L., Vion-Loisel, A., Nyíró, F., Purre, A.-H., Kuenen, M., Malveira Cavalcanti, V., Birk, S. and Hernandez Herrero, E. (2025). Value Chain Analysis in Key Economic Sectors. EU H2020 Research and Innovation Project MERLIN Deliverable D4.4. 1-53.

One MERLIN deliverable document was reviewed and commented on by the SAB:

Blackstock, K.L., Bérczi-Siket, A., Nyíró, F., Gray, R., Matthews, K.B., Wardell-Johnson, D., Kelly, K., Waylen, N., Neary, C., Provan, N., Kok, S., Kainer, P., Scriciu, Puiu, I., Ionescu, C., Hering D. and Birk, S. (2025). Cross-Sectoral Routemap for Mainstreaming Freshwater Nature-based Solutions in Europe.

The MERLIN project will be finalized in 2026 with the final meeting in Ghent, Belgium.



SAB proposals were considered at every Executive Board meeting, here in Helsinki in December 2025. Photo: Susann Warnecke

Work has also continued with the Growing Media 2050 project, which updates the Blok et al. (2019)<sup>2</sup> study about growing media demand and availability.

In 2025, the report about “The Growth of Growing Media Market by 2050: Demand and Availability of Raw Materials” (Nguyen, V.T.H., Barbagli, T., Blok, C., Zheng, Z., Mondaca-Duarte, F. and Vandecasteele, B., Wageningen University and Research) ordered by the IPS has been concluded and the manuscript submitted for

publication. The SAB hopes that the manuscript will be published in 2026.

In conclusion, 2025 has continued to be busy for the Scientific Advisory Board of the IPS, generally with the continuation of the previously initiated activities and projects such as participation in MERLIN and updates to the Growing Media 2050 study, which are planned to be finalized in 2026.

Other activities such as participation in conventions and consultations and IPS member webinars will be carried on and supported by the SAB and its Expert Groups in the long term.

The SAB will also continue to streamline and strengthen its Expert Groups in 2026.

Footnotes:

<sup>1</sup> Jordan, S., Berglund, Ö. and Purre, A.-H. (Ed.) (2025). Peatlands for Environment, Economy and Society: International Peatland Society Convention 2025. Uppsala. DOI: 10.54612/a.2ulieccdav.

<sup>2</sup> Blok, C., Eveleens B. and Van Winkel, A. (2019). Growing Media for Food and Quality of Life in the Period 2020-2050. III International Symposium on Growing Media, Composting and Substrate Analysis 1305.

*Dr Anna-Helena Purre*

Chair of the SAB  
anna-helena.purre (at) peatlands.org



## Reports of National Committees

### Canada

In 2025 the CSPMA team, with the strong support of the Board of Directors, were bold in our communications and were steadfast in our messaging on the importance of our Canadian Peat industry.

2025 showed us that 30+ years of academic collaboration has provided us with the science-based facts and evidence to stand our ground and represent the industry when it matters. The year began with uncertainty around the possibility of tariffs. While we had success navigating the file we cannot be complacent. Our relationship with our southern neighbours remains a vital link. This is why we have formed a strong working relationship with AmericanHort, and we know keeping our

finger on the pulse on an ever changing and moving file will be necessary.

Beyond international relations, 2025 was the year we saw much progress and relationship building on the domestic side. Our successful semi-annual meeting was held in Winnipeg in May.

This brought Manitoba's ministers from across all aisles together to learn more and be informed about the industry. Natural Resources Minister Ian Bushie, former Minister Jamie Moses, and others praised the industry for our sustainable and responsible management and recognized its value in the province. This type of recognition can only be given following hard and consistent messaging to our provincial officials. We'll continue to be proactive and engaged at the provincial level as we move into 2026.



**Canadian Sphagnum  
Peat Moss Association**

**Association canadienne  
de la tourbe de sphaigne**

After two years of development, we launched the redesigned [peatmoss.com](http://peatmoss.com). Under the leadership of our Communications Coordinator, Charleen, this site now serves as a tool for science-based facts, featuring resources on restoration, responsible extraction, FAQs, and more. In 2026 we plan to continue to develop this site to ensure it's a reliable source you can use and refer to when speaking about the industry. In 2026, we will also release new science-based factsheets, infographics to better tell the story, and more, to ensure the facts are delivered and digested to the right audiences.

Stéphanie, our VP of Science and Research Partnerships, has been one of our best defenses on the global stage. In September 2025, at the Growing Media 2025 Symposium in Germany, Stephanie challenged the narrative that peat is inherently "bad," presenting North American research on responsible management to international peers at the International Society for Horticultural Science (ISHS). Further, her role involving the collaboration between industry and academia continue to remain strong and as we slide into 2026 growing our scientific partnerships, through the Science Coordination Committee (SCC) and other paths, will continue to prove to be necessary.

The CSPMA provincial Task Forces also played an enormous role in the year's success. Peatland tours in Manitoba; initiating discussions in Alberta on the Peat Policy; and being a loud voice in the government's ear in New Brunswick during a fire management crisis. All these areas of collaboration

and teamwork proved to be successful and ensure that we are not forgotten as an important economic driver and contributors to the growing communities in these provinces.

The CSPMA's role at the IPS serves as a voice of leadership, strategic guidance and proves to be essential to ensure global governments do not turn their back on an industry that has proved to be essential for food security and well-being. Our scientific voices that help to make the IPS strong must continue to play a strategic and fundamental role to set the stage away from hyperbole and focus on the science-based facts when it comes to GHG emissions, carbon capture, and the important role peat and peatlands play in society.

For more information about the CSPMA or the research collaborations we have in Canada please reach out to Asha Hingorani, President of CSPMA and Board member of IPS. Asha can be reached at [asha \(at\) peatmoss.com](mailto:asha@peatmoss.com).

## China

In 2025, the China National Committee (hereafter "the Committee") led the domestic community of peatland scientists and industry professionals in advancing both academic exchange and industrial development.

From 22nd to 24th August 2025, the Committee played a key role in co-organising the International Symposium on Peatland Resource Conservation and Sustainable Development. Centred on the theme "Peatland Resource Conservation, Carbon Sink Function, and Green Utilization," the symposium featured parallel academic and industrial sessions. These systematically addressed key areas including peatland carbon sink assessment, as well as ecological restoration



techniques, pathways for peat resource utilisation, and industry prospects. The symposium brought together over 40 representatives from more than 20 universities, research institutions, and enterprises across China. Through dedicated thematic discussions and extensive exchanges, the event facilitated multiple collaboration agreements between enterprises, universities, and research institutes. A particular consensus was reached on the development and technological transfer of peat-based materials for saline-alkali soil improvement.

Furthermore, the members of the Committee actively participated in various domestic and international conferences related to peatland research. Prof. Shengzhong Wang, Chair of the Committee, and Prof. Meng Wang, Secretary General, attended the IPS 2025 Annual Convention and Post-Congress Tour in Sweden.

Prof. Mingming Zhang and Prof. Hongyan Zhao participated in the European Geosciences Union (EGU) General Assembly 2025 and the 17th Japan-Korea-China Joint Conference on Geography, respectively. Prof. Zhiwei Xu was invited to the 17th Chinese Forestry Youth Academic Annual Conference and the 1st Symposium on Forest-Grassland Carbon Cycling and Carbon Sink Assessment. Through sustained academic engagement and science communication efforts, the Committee effectively raised awareness among diverse stakeholders regarding the importance of peatland conservation and sustainable utilisation, thereby strengthening the theoretical underpinnings provided by peatland science for industrial development.

Concurrently, the Committee remained actively involved in promoting the peat industry, with a focus on providing technical support to peat-related enterprises. On one hand, the Committee assisted domestic peat enterprises in enhancing exchanges and cooperation with international counterparts concerning peat resources and technologies, facilitating global information connectivity. On the other,

regarding peatland resource conservation and sustainable utilisation, it provided scientific principles and technical recommendations to governments.

These efforts aimed to mitigate the impact of policy adjustments on the peat industry, effectively fulfilling the Committee's role as an industrial think tank and bridging mechanism. For instance, Prof. Zucheng Wang, Secretary of the Committee, attended the conference on "New-Generation Humic Substances: Soil Health and Green Agriculture Development." He presented on development trends in the peat humic acid industry and participated in the evaluation of multiple standards for humic acid fertilisers, providing support for quality assessment and methodologies, as well as the development of a standard system for peat humic acid products.

In 2026, the Committee will focus its efforts on the following key areas:

1. Organising Scientific Symposiums: To organise and host scientific symposiums on sustainable peatland development, strengthening both domestic and international cooperative exchanges and advancing peatland research.
2. Sustaining Academic and Industrial Engagement: To continue participating in relevant domestic and international industrial and academic conferences, systematically promoting the peat industry and conducting public outreach on peatland science.



IPS Board members during a bog walk in Latvia in March. Photo: S. Warnecke

3. Enhancing Scientific and Technical Services: To deepen scientific and technological consulting and technical services, consistently offering industrial consultations, sample analysis services, and technical guidance.

## Estonia

Estonia Peat Association members hold significant importance in the national economy, managing natural resources and providing jobs in rural areas. There are currently over 120 operating peat extraction sites in Estonia with a licenced area of approximately 21 thousand hectares.

The production amount remained approximately 30% lower (633 thousand tons) than average extraction amounts due to unfavourable weather conditions. A severe rainy and damp season in 2025, with for example June rainfall being 153% of the Estonian norm, posed challenges to both the agricultural and peat extraction sectors, so a state of emergency was announced by the government in autumn.

In terms of state politics in 2025, the strong focus on climate-related policies continued. Several regulations and documents are still currently in progress (in the drafting phase) by the Ministry of Climate, such as the road map for the peat industry in the draft of the climate-resilient economy law, while the law itself is currently

on pause. The development of the Nature Restoration Plan started at the end of 2025 and is planned to continue through the year 2026, with a possible amendment of the resource tax for peat production. The Estonian Peat Association is actively participating in those continuing discussions, aiming for science- and fact-based dialogues and decisions to balance between the sustainable management of already disturbed mires and protection areas and sustaining the peat industry.

In its everyday work, the Estonian peat sector continues its commitment to sustainable peatland management. In addition, Estonian peat producers maintain their dedication to restoring exhausted peat extraction sites, either completely or partly, according to principles of stepwise restoration which mitigates the impacts of the peat production site. Rewetting is currently the main but not the only after-use option used in Estonian peat extraction sites.

The Estonian Peat Association and its members are participating in and supporting scientific activities such the EU Waterlands project, in which restoration works around the Lavassaare area were finalized at the end of 2025 in cooperation with AS Tootsi Turvas, State Forest Management, the Estonian Fund for Nature and Tartu University.

As during previous years, the association has continued to support its members with up-to-date know-how about peatlands and the management

of peat resources related to environmental and economic impacts and important developments by holding the annual Winter Seminar in the early spring and providing educational presentations during the General Assembly in November.

The Estonian Peat Association will also organize the next Baltic Peat Producers Forum in Pärnu, Estonia; during 23 - 25 September 2026. More information can be found at <https://www.balticpeatproducersforum.eu>. Welcome!



During one of the dinners in Gysinge. Photo: Susann Warnecke

# Finland

The year 2025 marked the 76th year of operation for the Finnish Peatland Society. All annual meetings and seminars were held online throughout the year. The 76th volume of the journal *Suo - Mires and Peat* was published.

Active preparations were also carried out for the sixth Suopäivä - National Peatland Day, scheduled for 5 February 2026. In September, the society organized a multi-city peatland excursion, held simultaneously in three locations, focusing on the theme of urban peatlands.

## Meetings and Seminars

The Spring Annual Meeting was held remotely on 24 April 2025, with 16 participants. Following the meeting, the Spring Seminar commenced at 10:00 AM, attracting 25 attendees. The theme of the seminar revolved around current research topics presented by young researchers.

The invited speakers included Miika Läpikivi from the University of Oulu, who discussed catchment-based approaches to solving issues related to peatlands, and Zheng Yu from the University of Eastern Finland, who presented on the effect of water table levels on greenhouse gas emissions from agricultural peat soil through a mesocosm study. Olivia Kuuri-Riutta, also from the University of Eastern Finland, spoke on the impact of peatland-type-specific responses of photoautotrophic microbes on moss photosynthesis under long-term drying conditions and Annastiina Saari from the University of Helsinki, addressed the effects of ditch shallowing on peatland ecosystem services.

The Autumn Annual Meeting took place online on 3 December, starting at 9:00 AM, with 13 members in attendance. The Autumn Seminar followed immediately at 10:00 AM, with 25 participants.

This seminar focused on the biodiversity of restored peatlands. Keynote presentations were delivered by Jenni Hultman from the Natural Resources Institute Finland (LUKE), who discussed the impact of restoration on microbial diversity and function, Anna Laine-Petäjäkangas from the University of Eastern Finland (UEF), who presented on the effects of peatland restoration on plant communities and Merja Elo from the Finnish Environment Institute (SYKE), who addressed the effects of restoration on peatland butterflies.

Following the presentations, a general discussion ensued on the themes presented.

## Excursions

In 2025, autumn excursions were organized on 20 September, focusing on urban peatland themes across various locations in Finland. The excursions were led by members of the society's board and took place simultaneously in three different areas: the Helsinki metropolitan region, Oulu and Joensuu. A total of 22 participants joined the excursions.



At one of the many virtual meetings of the IPS.



The IPS Executive Board also visited a peat sculpture exhibition in Latvia's State Forests' headquarters in Riga. Photo: Susann Warnecke

communication of peatlands as landscape and cultural spaces (see <https://dgmtev.de/de/veranstaltungen/Veranstaltungen-2025/Veranstaltungen-2025.php>).

In addition, further training courses were offered in the field of peat moss identification and the ecosystem approach to peatlands and their soils. For example, the regular series of seminars and excursions on “Peatlands and Peat” as a training course in Zeven took place for the 26th time.

## Publications

The 76th volume of the journal *Suo - Mires and Peat* was published, continuing the society's long-lasting tradition of scientific publishing. The journal was distributed in a printed version to all subscribers. The published articles are also freely available online following open-access principles. For *Suo*, Leila Korpela served as Editor-in-Chief of *Suo* and Sakari Sarkkola as Associate Editor, both from LUKE.

## Other National Activities

The society participated in the Science Days event on 12 January 2025, by hosting a presentation session titled “Insights and Miststeps in Peatland Use”. Speakers included Sakari Sarkkola (LUKE), Markku Koskinen (University of Helsinki) and Jyri Maunuksela (Neova Group).

A similar seminar was held involving further training for the State Peatland Administration in Meppen.

Members of the society have also participated in various national and international working groups and expert committees, and actively contributed to the socio-political discussion on the protection and development of peatlands, the improvement of climate reporting through the introduction of flexible emission factors for different peatland ecosystems, possibilities for future peatland use and issues regarding substrate extraction, production and conservation.

The great socio-political interest in peatlands and other wetlands and the large number of projects currently underway in this area nationwide suggest that the next few years will bring lively discussions and a broad exchange of expertise.

## Germany

As in previous years, the topic of peat and peatlands was again the subject of many conferences, symposia and workshops in 2025. The DGMT and its members participated in various ways. Together with other NGOs and institutional partners, eight events were organised and held on topics such as peatland conservation, the development of degraded peatlands and peatlands as soil archives, as well as the educational

## Ireland

2025 was a busy year for the Executive Board of the IrPS. We held a very successful peatland road trip on the theme of agriculture in the west of Ireland, our representative attended several meetings of the IPS Executive Board plus the Annual Convention in Sweden, we successfully bid to hold an international meeting in Ireland in 2026 and we made a donation to the Allan Robertson Grants scheme.

## Peatland Road Trip

Thirty members of the Irish Peatland Society attended the peatland road trip. They visited eight peatland sites where landowners are engaged in farming and managing water levels within the peat soils for the benefit of biodiversity, habitat and environment. The sites visited were located in Counties Galway and Mayo within the zone of Atlantic Blanket Bog habitat in the west of Ireland. A leaflet detailing the itinerary and site visits was distributed to participants on the road trip. The roadtrip was subsidised through sponsorship.

## AGM and Executive Board Meetings

The IrPS held its AGM in October 2025 which was attended by nine members. The Activity report for 2024 and the Financial Accounts were adopted at the meeting. The Executive Board of the IrPS held six meetings during the year: in person and by zoom.

## Latvia

Latvia's peat sector continued to play an important role in the national economy in 2025, particularly in the production of horticultural growing media and in supporting regional employment, responsible land management, and exports. The IPS Latvia National Committee carried on working as a platform bringing together peat producers, researchers, land managers, and policy experts in order to strengthen knowledge-based dialogue on peatlands, in addition to peat extraction, after-use, and climate policy.

A major focus in 2025 was the development and presentation of the Sustainability Memorandum for the Latvian peat sector. The Committee invested considerable effort in explaining why a common sustainability framework is needed, how it should be implemented in practice, and why the signing of the memorandum must be followed by real monitoring of commitments and measurable action. This work also involved dialogue with the Ministry of Climate and Energy and with other stakeholders concerned with greenhouse gas accounting, restoration, and the future regulatory framework for peat extraction and post-extraction land use.

The Committee was also actively involved in national policy discussions concerning natural resource taxation, climate policy, and the treatment of peatlands in the land use, land use change, and forestry (LULUCF) sector.

Particular attention was paid to ensuring that policy proposals are scientifically justified, economically realistic, and socially fair, especially for rural regions. The Committee continued to argue that environmental and climate measures should support practical emission reduction, restoration, and recultivation solutions rather than simply create additional financial pressure on the sector without delivering measurable environmental gains.

In the field of outreach and education, 2025 was marked by a broad range of public and professional activities. Committee representatives participated in lectures, stakeholder meetings, media discussions, and training events, including activities connected with universities, forest owners, peatland managers, and the wider public.

The Committee also continued its educational work on peatland management, restoration, and the multiple after-use options for extracted peatlands, including forestry, agriculture, paludiculture, and nature-based solutions. The Committee also highlighted women's leadership and visibility in peatland-related work through calendar-based communication and outreach activities that helped present peatland expertise to wider audiences in a more accessible and engaging format.

International cooperation remained a central priority. Latvia hosted the IPS Board meeting





Successful IPS Board meeting in Riga, host Ilze Ozola third from left. Photo: Susann Warnecke

in Riga in March 2025, which strengthened the visibility of the Latvian Committee within the international peatland community.

Committee representatives also continued to be active in IPS governance, contributed to international discussions on peatland emissions and Intergovernmental Panel on Climate Change (IPCC)-related issues, and carried on preparations for the International Peatland Congress 2028 in Riga. At the regional level, the Committee maintained close cooperation with IPS partners and assisted with the preparation of the Baltic Peat Producers Forum in Riga.

Ilze Ozola's attendance at the Conference of the Parties (COP30) further increased the international visibility of Latvia and helped bring peatland management perspectives into broader climate policy discussions. She also took part in the IPS seminar "Empowering the Voice of Science for the Wise Use of Peatlands," reinforcing the Committee's commitment to science-based dialogue, international cooperation, and informed decision-making. Ilze Ozola also participated in the IPS Annual Assembly and conference in Sweden, where she represented the Latvian National Committee and delivered four presentations.

In addition, the Committee continued to emphasise the importance of experience exchange and practical learning. Field-based events, Peat Day and Forest Day activities, and cooperation

with other organisations helped demonstrate that responsible peatland management requires an integrated approach covering extraction, restoration, biodiversity, carbon accounting, and economically viable after-use. The Committee also highlighted the need to learn from neighbouring countries and to adapt best practices to Latvian conditions.

Overall, 2025 was a year of intensive policy engagement, international visibility, and continued sector coordination. The IPS Latvia National Committee further strengthened its role as a trusted national contact point for peatland-related expertise and as an active contributor to international peatland dialogue. The Committee will continue to work for balanced, science-based, and forward-looking peatland management in Latvia and beyond.

### Key 2025 highlights

- Sustainability Memorandum advanced and presented as a practical framework for sector commitments.
- Continued policy dialogue on LULUCF, emissions accounting, restoration, and natural resource taxation.
- IPS Board meeting hosted in Riga in March 2025.
- Participation in COP30 Brazil.
- Ongoing preparations for the International Peatland Congress 2028 in Riga.
- Active public outreach through lectures, seminars, stakeholder meetings, and peatland field events.
- First Peat and Peatland calendar.

## Malaysia

In 2025, the Malaysian Peat Society (MPS) advanced its dual mission of building the next generation of science talent and strengthening tropical peatland knowledge exchange through targeted youth outreach and strong international research representation.

In close collaboration with the Academy of Sciences Malaysia (ASM), the MPS delivered school-based science, technology, engineering and mathematics (STEM) programmes to broaden

students' scientific understanding, cultivate their curiosity and critical thinking and encourage them to pursue future pathways in science and technology.

### Strengthening STEM Culture Through Hands-on Youth Outreach

A flagship initiative, "Delving into the Science of Plant Tissue Culture", was successfully held on 12 July 2025 in partnership with ASM and SMK Batu Lintang, Kuching. The programme engaged 49 students (Form 4 and Form 6) and 14 science teachers through an interactive mix of talks, demonstrations and hands-on learning in fundamental biotechnology, particularly basic plant tissue culture techniques. Participants gained exposure to real-world applications of tissue culture in agriculture, research and conservation, illustrating how science translates directly into solutions for societal needs.

This outreach aligns with the Sarawak government's priority to strengthen the agriculture sector in support of food security by building awareness of enabling technologies that can enhance planting material quality, productivity and resilience.

The programme recorded strong enthusiasm, active participation and high-quality engagement, reflected in lively discussion sessions and meaningful student takeaways, signalling clear progress in nurturing a STEM mindset at the school level.

### Sustaining Momentum into 2026

Building on the encouraging outcomes from SMK Batu Lintang, a follow-up youth outreach programme is scheduled for 17 January 2026, at SMK Sibujaya, Sibujaya, Sarawak.

The programme will continue to inspire students to explore STEM through hands-on science engagement,

reinforce the relevance of science in daily life and highlight pathways for further study and careers in STEM-related fields.

### Elevating Malaysian Peatland Research on the Global Stage

Beyond youth programmes, the MPS played a significant role in enabling members to share peatland research internationally, strengthening the visibility of tropical peatland science and expanding collaboration networks.

In 2025, MPS members represented the society at major platforms, including:

- IPS Annual Convention, Gysinge, Sweden (9-12 June)
- 12th INTECOL Wetlands Conference, Tartu, Estonia (29 June-4 July)
- Fifth International Peatlands of Siberia Conference, Tomsk, Russia (8-14 September)
- AsiaFlux Conference, Pangkalan Kerinci, Riau, Indonesia (20-25 October)
- COP30 (UNFCCC), Belém, Brazil (10-21 November)

These engagements supported the presentation of research findings, development of cross-border partnerships and deeper exchange of scientific and management perspectives, reinforcing the MPS as an active contributor to the international peatland community.

### Overall Impact and Forward Contribution

MPS members' strong participation in outreach and international knowledge exchange highlights



Group photo from the youth outreach program at SMK Batu Lintang. Photo: MPS

Malaysian group at the IPS Annual Convention 2025. Photo: MPS



the Dutch State Forestry (Staatsbosbeheer), Bol Peat BV and the Dutch Soil Science Society.

Members of our Board have participated in the Annual Assembly in Gysinge in Sweden and the Baltic Peat Producers Forum in Riga, Latvia. In addition, a delegation was present at an international meeting on peat and substrates in Bad Zwischenahn, Germany.

the society's ongoing commitment to tropical peatland research, advocacy and sustainable management. By mobilizing support for science, strengthening the peat soil evidence base and promoting best practices, the MPS contributes to:

- peatland conservation and restoration,
- the advancement of peat soil science for sustainable agriculture including improved crop performance and productivity and
- food security and economic resilience at national and regional levels.

Together, these efforts advance scientific understanding, enhance collaboration and support climate change mitigation and adaptation, helping to shape a healthier, more resilient planet for current and future generations.

## The Netherlands

In March 2025 the Dutch IPS Committee organised a webinar on the results of the Netherlands Research Programme on Greenhouse Gas Dynamics in Peatlands and Organic Soils (NOBV). The presentation was given by our Board member ir. Jan van den Akker from Wageningen University and Research (WUR).

In July, we had our Annual Meeting for members, including an excursion to a nature development project in Weimeren where peat is excavated to create a wetland habitat. The peat is used for the production of casing soil for mushroom growing. The field visit was organised in cooperation with

We have also prepared a webinar on the EU Nature Restoration Law and its consequences for peatland use and management in the Netherlands and Germany with presentations by Irene Bouwma (Wageningen UR) and Bernd Hofer (Hofer & Pautz GbR). It had to be postponed until 20 January 2026.

During 2025 we were happy to welcome some new individual and corporate members, confirming our impression that we succeeded in drawing more attention to our work and our society.

## Sweden

In 2025, together with the Swedish University of Agricultural Sciences (SLU) and the IPS, the Swedish Peat Research Foundation (TorvForsk) organised and held the IPS Convention "Peatlands for Environment, Economy and Society" in Gysinge, Sweden, along with the subsequent excursion to northern Sweden. The Convention brought together 78 peatland and peat experts from 18 countries. TorvForsk thanks all contributors for their efforts.

TorvForsk has conducted intensive work to disseminate knowledge about peatlands and their importance for the climate and environment, and was involved in discussions for the implementation of the new restoration law. As in previous years, TorvForsk has focused in particular on greenhouse gas fluxes, peat characteristics, and rewetting of drained peatlands. Through active participation in media and various professional forums, TorvForsk

has contributed to raising public and policy-makers' awareness of the importance of our natural, managed, and restored peatlands.

## United States

The United States National Committee co-opted Randy Kolka as Chair as Curt Richardson stepped down.

Randy holds degrees in Soil Science, from the University of Wisconsin-Stevens Point, and MS and PhD degrees from the University of Minnesota with minors in Forest Resources and Water Resources. Following his last position as Assistant Professor of Watershed Management at the University of Kentucky he became a Research Soil Scientist with the USDA Forest Service's Northern Research Station in Grand Rapids, MN in 2002.

He studies the cycling of water, elements, and pollutants in forested, wetland, agricultural, and urban ecosystems across the globe. He is an adjunct faculty member at six universities and has published over 290 scientific articles in his career. In particular, research on peatlands, carbon storage, mercury cycling, wildfire, climate change and their interactions have been the focus of much of his career.

He is also the co-lead of the USDA Forest Service Marcell Experimental Forest, a long-term peatland/watershed research site, a principal investigator of a funded effort to restore peatlands across the US called PeatRestore that created a new national peatland condition map and the first ever map of peatlands on national forest lands, the US Science lead to the Sustainable Wetlands Adaptation and Mitigation Program (SWAMP), an international collaboration focused on tropical peatland and mangrove ecosystems, and the USDA Forest Service lead on the Spruce and Peatlands Responses Under

Changing Environments (SPRUCE) experiment, the most expansive climate change manipulative experiment on the planet.

Two new corporate members have joined our National Committee, Pantheon Regeneration PBC and Duke University Wetland and Coasts Center (DWCC). Founded in 2023, Pantheon is a Public Benefit Corporation that develops, finances and manages projects that remove and reduce greenhouse gas emissions from the atmosphere while restoring ecosystems.

In partnership with DWCC, the company's first project Pocosin Ecological Reserve I (PER I) on 4,000ha in coastal North Carolina, is one of the first commercial peatland restoration project in the US as well as being the first peatland carbon farm in the US. Long-term monitoring of water levels and assessing the site's carbon balance via Eddy Covariance studies and soil respiration chambers is being used to develop verifiable carbon credits that will be sold to companies in need of carbon offsets.

Investors in the project include AXA IM Alts (merging with BNP Paribas Asset Management), the Grantham Foundation, Trailhead Capital, McDonald Pelz and the Microsoft's Climate Innovation Fund.

For further submissions and latest contact details, visit [www.peatlands.org/about-us/national-committees](http://www.peatlands.org/about-us/national-committees).



The post-convention tour to northern Sweden was one of the highlights of IPS activities in 2025, here the participants in Norway. Photo: Anna-Helena Purre

# Whom to contact for IPS matters

## Executive Board

Hannu Salo, Finland  
President  
hannu.salo (at) peatlands.org

Dr Ilze Ozola, Latvia  
First Vice President  
ilze.ozola (at) epicentrs.lv

Dr Anna-Helena Purre, Estonia  
Second Vice President, SAB Chair  
anna-helena.purre (at) peatlands.org

Asha Hingorani, Canada  
asha (at) peatmoss.com

Bernd Hofer, Germany  
hofer (at) hofer-pautz.de

Dr Sabine Jordan, Sweden  
sabine.jordan (at) slu.se

Dr Lulie Melling, Malaysia  
luliemelling (at) gmail.com

Päivi Peronius, Finland  
paivi.peronius (at) neova-group.com

Paddy Rowland, Ireland  
paddy.rowland (at) bnm.ie

Guus van Berckel, The Netherlands  
g.vanberckel (at) griendtsveen.de

Professor Meng Wang, China  
wangm581 (at) nenu.edu.cn

Status: 30 April 2026

## Commission Chairs (SAB) and Expert Groups

### Peatlands and Economy

Chair: Philip Testroet, Germany  
testroet (at) ivg.org

1st vice-chair: Guus van Berckel  
g.vanberckel (at) griendtsveen.de

2nd vice-chair: Giedrius Kavaliauskas  
giedrius.kavaliauskas (at) klasmann-deilmann.com

3rd vice-chair Jos Schouwenaars  
josschouwenaars (at) kpnmail.nl

### Expert Groups

Peatlands for Agriculture  
Jos Schouwenaars  
josschouwenaars (at) kpnmail.nl

Peatlands for Forestry  
Sakari Sarkkola  
sakari.sarkkola (at) luke.fi

Peat for Growing Media  
Philip Testroet  
testroet (at) ivg.org

### Peatlands and Environment

Chair: Bernd Hofer, Germany  
hofer (at) hofer-pautz.de

1st vice-chair: Maria Strack  
mstrack (at) uwaterloo.ca

2nd vice-chair: Meng Wang  
wangm581 (at) nenu.edu.cn

### Expert Groups

Peatlands and Climate Change, vacant

Peatlands and Biodiversity  
Lydia Cole  
lydcole (at) gmail.com

Peatland Restoration  
Stéphanie Boudreau  
science (at) tourbehorticulture.com

### **Peatlands and Society**

Chair: Ilze Ozola, Latvia  
ilze.ozola (at) epicentrs.lv

#### *Expert Groups*

Peatlands and Education, Communication and  
Publicity  
Ilze Ozola  
ilze.ozola (at) epicentrs.lv

Peatland Conventions and International Affairs  
Line Rochefort  
line.rochefort (at) fsaa.ulaval.ca

Peatlands and Culture  
Ilze Ozola  
ilze.ozola (at) epicentrs.lv

Peatlands and people, health and local livelihoods  
vacant

Peatlands and archaeology (new)  
Mirjam Briel  
mirjambriel (at) yahoo.de

## **National Committees**

### **Canada**

Asha Hingorani  
asha (at) peatmoss.com

Secretary Shauna Wright  
shauna (at) peatmoss.com

### **China**

Dr Shengzhong Wang  
szwang (at) nenu.edu.cn

Dr Meng Wang  
wangzc100 (a) nenu.edu.cn

### **Estonia**

Jüri Tiidermann  
jueri.tiidermann (at) asbgreenworld.com

Kersti Rannamäe  
kersti (at) turbaliit.ee

Annika Päsik  
annika (at) turbaliit.ee

### **Finland**

Dr Markku Koskinen (Suoseura)  
markku.koskinen (at) helsinki.fi

Dr Sanna Piilo  
suoseura49 (at) gmail.com

Hannu Salo (industry)  
hannu.salo (at) bioenergia.fi

### **Germany**

Dr Andreas Bauerochse (DGMT)  
bauerochse (at) dgmtev.de

Philip Testroet (IVG)  
testroet (at) ivg.org

### **Ireland**

Dr. Catherine O'Connell  
cajohnfz (at) gmail.com

Pat Fitzgerald  
patandclairefitzgerald (at) gmail.com

Paddy Rowland  
paddy.rowland (at) bnm.ie

### **Latvia**

Dr Ilze Ozola  
ilze.ozola (at) epicentrs.lv

Karīna Āboliņa-Zalpētere  
k.abolina-zalpetere (at) lvm.lv

## Lithuania

Giedrius Kavaliauskas  
giedrius.kavaliauskas (at) klasmann-deilmann.com

## Malaysia

Dr Lulie Melling  
luliemelling (at) gmail.com

John Wai Seng Ko  
jwsko2 (at) yahoo.co.uk

## The Netherlands

Dr Guus van Berckel  
g.vanberckel (at) griendtsveen.de

Dr Ir Jos Schouvenaars  
josschouvenaars (at) kpnmail.nl

## Sweden

Dr Sabine Jordan  
sabine.jordan (at) slu.se

Pia Holmberg  
pia.holmberg (at) hasselforsgarden.se

## Ukraine

Andrii Ozerchuk  
uapeatsociety (at) gmail.com

Volodymyr Hnieushev  
volod-g (at) ukr.net

## United Kingdom

Professor Susan Page  
sep5 (at) le.ac.uk

Professor Jack Rieley  
jack.rieley (at) btinternet.com

## United States

Dr Randy Kolka  
randall.k.kolka (at) usda.gov

Orion Russell Blake  
orion (at) flooded.farm

For further information, see <https://peatlands.org/about-us/national-committees> and join us as a member.



The Annual Assembly of National Representatives in Gysinge in June. Photo: Susann Warnecke

# Key peat and peatland events 2025

Finnish Science Days Presentation on insights and mistakes in peatland management Helsinki, Finland 12 January 2025 <a href="https://www.tieteenpaivat.fi">https://www.tieteenpaivat.fi</a>	24 April 2025 <a href="https://www.suoseura.fi">https://www.suoseura.fi</a>
IPS Executive Board meeting (online) 14 January 2025	IPS member webinar: Visitors in peatlands - look back over your shoulder 28 April 2025 <a href="https://bit.ly/ipsm25">https://bit.ly/ipsm25</a>
IPS member webinar: Microclimate of peatlands - a new subgroup in the SoilTemp database 28 January 2025 <a href="https://bit.ly/ipsm25">https://bit.ly/ipsm25</a>	EGU General Assembly 2025 Vienna, Austria & online 27 April - 2 May 2025 <a href="https://www.egu25.eu">https://www.egu25.eu</a>
IPS Executive Board meeting (online) 13 February 2025	Bioenergia ry Spring Meeting Helsinki & online, 29 April 2025 <a href="https://www.bioenergia.fi">https://www.bioenergia.fi</a>
IPS member webinar: Peatlands in EU policies 19 February 2025 <a href="https://bit.ly/ipsm25">https://bit.ly/ipsm25</a>	Conference "Measuring peatlands - current methods of data collection in peatlands" Breitenbrunn, Germany 8 - 9 May 2025 <a href="http://www.dgmteve.de">www.dgmteve.de</a>
2nd European Carbon Farming Summit 4 - 6 March 2025 Dublin, Ireland <a href="https://www.carbonfarmingsummit.eu">https://www.carbonfarmingsummit.eu</a>	IPS National Committee Round Table I (online) 13 May 2025
MERLIN Final Project Meeting Ghent, Belgium 9 - 13 March 2025 <a href="https://project-merlin.eu">https://project-merlin.eu</a>	26th Seminar and excursion on peatlands and peat Zeven, Germany 23 - 24 May 2025 <a href="http://www.dgmteve.de">www.dgmteve.de</a>
Estonian Peat Association Winter Seminar Tõrve, Estonia 13 March 2025	Rainforest HEU Workshop on Transformative Pathways for Peatland Conservation and Restoration (online) 26 May 2025
IPS Executive Board meeting Riga, Latvia 26 March 2025	World Peatlands Day 2 June 2025 #worldpeatlandsday
IPS member webinar: Microbial CO <sub>2</sub> fixation in peatlands 31 March 2025 <a href="https://bit.ly/ipsm25">https://bit.ly/ipsm25</a>	IPS Annual Convention 2025 Gysinge, Sweden & excursion to Kiruna, Lapland 9 - 12 June 2025
Finnish Peatland Society Spring Meeting (online)	IPS Executive Board meeting Gysinge, Sweden 9 June 2025

<p>Scientific Advisory Board meeting Gysinge, Sweden 9 June 2025</p>	<p>IPS member webinar: Getting people to peatlands 9 September 2025 <a href="https://bit.ly/ipsm25">https://bit.ly/ipsm25</a></p>
<p>Workshop on the identification of peat and other organic soils (KA6) Freising, Germany 11 - 13 June 2025 <a href="http://www.dgmtev.de">www.dgmtev.de</a></p>	<p>Lower Saxony mire landscapes - an exchange of experiences: Landscape hydrology Schneverdingen, Germany 8 - 9 September 2025 <a href="https://www.dgmtev.de">https://www.dgmtev.de</a></p>
<p>UNFCCC SB62 Bonn, Germany 16 - 26 June 2025 <a href="https://unfccc.int">https://unfccc.int</a></p>	<p>Remote and local methods of peatland restitution and use Malchin, Mecklenburg-Vorpommern, Germany 11 September 2025 (to be postponed) <a href="https://www.dgmtev.de">https://www.dgmtev.de</a></p>
<p>12th INTECOL Wetlands Conference &amp; 20th Annual Meeting of the Society of Wetland Scientists 29 June - 4 July 2025 Tartu, Estonia <a href="https://sisu.ut.ee/intecol-wetlands2025">https://sisu.ut.ee/intecol-wetlands2025</a></p>	<p>IPS Business Meeting: Empowering the Voice of Science for the Wise Use of Peatlands Riga, Latvia 16 September 2025</p>
<p>Society of Wetland Scientists Annual Meeting Providence, Rhode Island, USA 15 - 18 July 2025 <a href="https://www.sws.org">https://www.sws.org</a></p>	<p>Baltic Peat Producers Forum Riga, Latvia 17 - 19 September 2025 <a href="https://www.balticpeatproducersforum.eu">https://www.balticpeatproducersforum.eu</a></p>
<p>Ramsar COP15 15th meeting of the Conference of the Contracting Parties of the Convention on Wetlands Victoria Falls, Zimbabwe 23 - 31 July 2025 <a href="https://www.ramsar.org">https://www.ramsar.org</a></p>	<p>Finnish Peatland Society Excursions to urban peatlands Helsinki, Oulu, Joensuu, Finland 20 September 2025</p>
<p>International Symposium on Peatland Resource Conservation and Sustainable Development China 22 - 24 August 2025</p>	<p>RRR2025 - Renewable Resources from Wet and Rewetted Peatlands: 4th International Conference on the Utilisation of Wetland Plants Greifswald, Germany 23 - 26 September 2025 <a href="https://www.moorwissen.de/rrr2025.html">https://www.moorwissen.de/rrr2025.html</a></p>
<p>IPS Executive Board meeting (online) 2 September 2025</p>	<p>11th World Conference on Ecological Restoration Denver, United States 30 September - 4 October 2025 <a href="https://ser2025.org">https://ser2025.org</a></p>
<p>ISHS - IPS II International Symposium on Growing Media, Compost Utilization and Substrate Analysis for Soilless Cultivation Freising, Germany 7 - 12 September 2025 <a href="https://www.ishs.org/symposium/837">https://www.ishs.org/symposium/837</a></p>	<p>IUCN UK Peatland Programme Conference Water Connections: from Source to Sea Derry/Londonderry, UK 30 September - 2 October 2025 <a href="https://www.iucn-uk-peatlandprogramme.org">https://www.iucn-uk-peatlandprogramme.org</a></p>
<p>Lower Saxony mire landscapes - an exchange of experiences: Landscape hydrology Camp Reinsehlen, Germany 8 - 9 September 2025 <a href="http://www.dgmtev.de">www.dgmtev.de</a></p>	<p>Latvian National Committee: Peat Days Bulduri, Latvia 1 - 10 October 2025 <a href="https://www.epicentrs.lv">https://www.epicentrs.lv</a></p>

IUCN World Conservation Congress  
Abu Dhabi, UAE  
9 - 15 October 2025  
<https://iucncongress2025.org>

Peatland education symposium: Peatland vision -  
Education in the swamp of possibilities  
Hamburg, Germany  
10 - 12 October 2025  
<https://www.dgmtv.de>

AsiaFlux 2025  
Riau, Indonesia  
20 - 25 October 2025  
<https://asiaflux.net>

IPS member webinar: MERLIN's Peat Extraction  
Sector Strategy  
22 October 2025  
<https://bit.ly/ipsm25>

9th Flow Country Research Conference:  
From Capitulum to Catchment  
28 - 30 October 2025  
<https://www.eri.ac.uk/flow-country-research-conference>

IPS Executive Board meeting (online)  
30 October 2025

Scientific Advisory Board meeting (online)  
31 October 2025

IPS member webinar: Solar and wind power for  
previous peat extraction areas  
3 November 2025  
<https://bit.ly/ipsm25>

IVG Sector Day Soils & Substrates  
Bad Zwischenahn, Germany  
6 November 2025  
<https://ivg.org/veranstaltungen>

Estonian Peat Association  
Annual Assembly  
Rakvere, Estonia  
6 November 2025

UNFCCC COP30  
Belém, Brazil  
10 - 21 November 2025  
<https://unfccc.int>

MoorNet  
Final Conference 2025  
Implementation of the National Peatland  
Protection Strategy  
Berlin, Germany  
11 - 13 November 2025  
<https://www.ecologic.eu/20090>

CSPMA Annual Meeting  
Montréal, Canada  
12 - 13 November 2025  
<https://peatmoss.com>

Peat moss identification course (Sphagnum course)  
Ahlenmoor, Germany  
13 - 16 November 2025  
[www.dgmtv.de](http://www.dgmtv.de)

IPS National Committee Round Table II "Local to  
Global: Sharing Best Practices" (online)  
19 November 2025

28th meeting of the Scientific and Technical  
Review Panel (STRP28) of the Ramsar Convention  
on Wetlands  
Gland, Switzerland  
24 - 27 November 2025  
<https://www.ramsar.org>

Between nature conservation and cultural  
heritage - peatland landscapes in transition  
Duvensee, Kreis Herzogtum Lauenburg, Germany  
25 - 26 November 2025  
<https://www.dgmtv.de>

IPS Executive Board meeting  
Helsinki, Finland  
2 December 2025

IPS member webinar: Towards updated emission  
factors for tropical peatlands  
3 December 2025  
<https://bit.ly/ipsm25>

Finnish Peatland Society  
Autumn Annual Meeting & Seminar  
Online  
3 December 2025

The latest list of peat and peatland events can  
always be found at [www.peatlands.org/events](http://www.peatlands.org/events).

# **International Peatland Society**

**Business ID: 1074181-4**

Financial statement in accordance with the Accounting Ordinance for  
small- and micro-sized enterprises  
between 01.01.2025 - 31.12.2025

These financial statements must be retained until 31 December 2035

# Financial statement 01.01.2025 - 31.12.2025

## Contents

Balance sheet .....	3
Income statement .....	5
Notes to the Financial Statements .....	6
Signatures .....	7
Auditor's note .....	8
List of accounting books and materials .....	9

Financial statements shall be retained for at least 10 years after the end of financial year.

Accounting records shall be retained for at least 6 years from the end of that year.

The financial statements prepared by:  
TietoAkseli Ltd, an authorized accounting firm  
[info@tietoakseli.fi](mailto:info@tietoakseli.fi)

Address: Suuruspääntie 11 C 9, 40520 JYVÄSKYLÄ      Business ID: 1074181-4  
Domicile: Jyväskylä

1074181-4

## Balance sheet

	31.12.2025	31.12.2024
<b>ASSETS</b>		
<b>NON-CURRENT-ASSETS</b>		
<b>Tangible assets</b>		
Machinery and equipment	160,83	214,44
<b>Tangible assets in total</b>	160,83	214,44
<b>NON-CURRENT ASSETS TOTAL</b>	<b>160,83</b>	<b>214,44</b>
<b>CURRENT ASSETS</b>		
<b>Receivables</b>		
<b>Short term</b>		
Trade debtors	35 266,00	9 622,69
Other receivables	751,67	751,67
Prepayments and accrued income	100,00	150,64
<b>Short-term receivables in total</b>	36 117,67	10 525,00
<b>Total receivables</b>	36 117,67	10 525,00
<b>Investments</b>		
Other investments	250 484,90	0,00
<b>Investments in total</b>	250 484,90	0,00
<b>Cash in hand and at banks</b>	27 226,98	299 408,64
<b>CURRENT ASSETS TOTAL</b>	<b>313 829,55</b>	<b>309 933,64</b>
<b>ASSETS IN TOTAL</b>	<b>313 990,38</b>	<b>310 148,08</b>

1074181-4

	<b>31.12.2025</b>	<b>31.12.2024</b>
<b>LIABILITIES</b>		
<b>CAPITAL AND RESERVES</b>		
Retained earnings	254 348,28	273 986,08
Surplus (-deficits) for the financial year	11 007,00	-19 637,80
<b>CAPITAL AND RESERVES TOTAL</b>	<b>265 355,28</b>	<b>254 348,28</b>
<b>CREDITORS</b>		
<b>Short term</b>		
Accounts Payables	1 597,84	23 908,46
Other creditors	31 194,91	18 415,67
Accruals and deferred income	15 842,35	13 475,67
<b>Short term creditors total</b>	<b>48 635,10</b>	<b>55 799,80</b>
<b>Creditors in total</b>	<b>48 635,10</b>	<b>55 799,80</b>
<b>LIABILITIES IN TOTAL</b>	<b>313 990,38</b>	<b>310 148,08</b>

1074181-4

## Income statement

	01.01.2025 - 31.12.2025	01.01.2024 - 31.12.2024
<b>ACTUAL OPERATION</b>		
<b>PUBLISHING</b>		
Income	6 386,32	14 472,21
Expenses	-3 626,36	-15 312,33
<b>PUBLISHING TOTAL</b>	<b>2 759,96</b>	<b>-840,12</b>
<b>CONFERENCES</b>		
Income	0,00	21 496,45
Expenses	-2 016,84	-96,24
<b>CONFERENCES TOTAL</b>	<b>-2 016,84</b>	<b>21 400,21</b>
<b>PROJECTS</b>		
Income	19 607,50	48 008,26
Expenses	-19 130,10	-38 373,65
<b>PROJECTS TOTAL</b>	<b>477,40</b>	<b>9 634,61</b>
<b>OTHER ACTUAL OPERATION</b>		
<b>Income</b>		
Income	500,00	3 721,10
<b>Expenses</b>		
Wages and salaries	-83 664,91	-110 085,56
Pensions	-13 970,68	-12 780,19
Other insurances required by law	-3 400,84	-9 667,84
Depreciations	-53,61	-71,48
Other expenses	-46 426,66	-67 966,21
<b>OTHER ACTUAL OPERATION TOTAL</b>	<b>-147 016,70</b>	<b>-196 850,18</b>
<b>ACTUAL OPERATION TOTAL</b>	<b>-145 796,18</b>	<b>-166 655,48</b>
<b>SURPLUS-/OPERATING DEFICIT</b>	<b>-145 796,18</b>	<b>-166 655,48</b>
<b>MEMBERSHIP FEES</b>		
Income	158 861,00	152 904,50
Expenses	-2 544,00	-8 849,00
<b>MEMBERSHIP FEES TOTAL</b>	<b>156 317,00</b>	<b>144 055,50</b>
<b>SURPLUS-/TRADING DEFICIT</b>	<b>10 520,82</b>	<b>-22 599,98</b>
<b>INVESTMENT AND FINANCING ACTIVITY</b>		
Income	486,18	2 962,18
Expenses	0,00	0,00
<b>INVESTMENT AND FINANCING ACTIVITY TOTAL</b>	<b>486,18</b>	<b>2 962,18</b>
<b>SURPLUS-/OPERATING DEFICIT</b>	<b>11 007,00</b>	<b>-19 637,80</b>
<b>SURPLUS FOR THE FINANCIAL YEAR</b>	<b>11 007,00</b>	<b>-19 637,80</b>

1074181-4

## Notes to the Financial Statements

### Valuation, matching and translation principles and methods applied

This financial statement has been prepared in accordance with the Government Decree on the information to be presented in the financial statements of micro-undertakings, Chapter 3, Section 1, Subsections 2 and 3.

### Information Concerning the Off-Balance Sheet Arrangements and the Financial Commitments

	31.12.2025	31.12.2024
Office lease deposit	750,00	1 050,00

### Personnel

	31 December 2025	31 December 2024
Average number of employees	1	1,5

### Capital

#### Changes in capital

	31.12.2025	31.12.2024
Retained surplus	254 348,28	273 986,08
Surplus (-deficit) for the financial year	11 007,00	-19 637,80
<b>Capital and reserves</b>	<b>265 355,28</b>	<b>254 348,28</b>

### Total income

	31.12.2025	31.12.2024
Total income	185 841,00	243 564,70
Total expenditure	-174 780,39	-263 131,02
Depreciation	-53,61	-71,48
<b>Surplus (-deficit) for the financial year</b>	<b>11 007,00</b>	<b>-19 637,80</b>

## Income Statement detailed

INCOME STATEMENT	Realised 2025	Realised 2024
<b>INCOME</b>		
Membership fees		
<b>Membership fees total</b>	<b>158,861 €</b>	<b>152,905 €</b>
Publishing		
Sales of magazines	60 €	60 €
Advertisement income	4,348 €	4,380 €
Sales of publications	1,611 €	9,496 €
Other publication income	368 €	536 €
<b>Publishing total</b>	<b>6,386 €</b>	<b>14,472 €</b>
Events		
Travelling and meeting income	0 €	0 €
Conference income (15% Congress commission)	0 €	21,496 €
<b>Events total</b>	<b>0 €</b>	<b>21,496 €</b>
Other		
Grant contributions	500 €	2,500 €
Project income (WUR, Merlin)	19,608 €	48,008 €
Donations	0 €	1,221 €
Interest income	486 €	2,962 €
<b>Other income total</b>	<b>20,594 €</b>	<b>54,692 €</b>
<b>INCOME TOTAL</b>	<b>185,841 €</b>	<b>243,565 €</b>
<b>EXPENSES</b>		
Staff and external services		
Salaries	-83,665 €	-110,086 €
Auditing	-1,883 €	-1,860 €
Accounting	-9,506 €	-13,383 €
Social security	-2,692 €	-9,073 €
Pension funds	-13,971 €	-12,780 €
Insurances required by law	-708 €	-595 €
Healthcare (50% to be refunded)	-2,998 €	-560 €
Other social costs	-419 €	-1,018 €
Training	-250 €	-395 €
<b>Staff and external services total</b>	<b>-116,093 €</b>	<b>-149,749 €</b>
Facilities and administration		
Rent & related	-9,387 €	-8,899 €
Cleaning & recycling	-70 €	-722 €
Office equipment	415 €	-1,270 €
Office materials	-45 €	-430 €
Printing and copying	-907 €	-994 €
Books and magazines	0 €	-949 €
Mailing	-373 €	-3,548 €
Phone and internet	-849 €	-855 €
IT and maintenance	-1,365 €	-1,360 €
Office catering and staff occasions	-47 €	-146 €
Other insurances	-1,867 €	-2,298 €
Other costs	-181 €	-2,371 €
<b>Facilities and administration total</b>	<b>-14,676 €</b>	<b>-23,841 €</b>

Travelling		
Domestic travelling and accommodation	-666 €	-1,059 €
Domestic allowances	-128 €	-429 €
Foreign allowances	-1,293 €	-2,906 €
Mileage allowances	-756 €	-80 €
Secretariat foreign travelling and accommodation	-2,269 €	-2,582 €
EB travelling and accommodation	-769 €	-2,857 €
SAB travelling and accommodation	0 €	0 €
SO travelling and accommodation	0 €	-3,659 €
Meeting costs/room rents/internal catering	-2,699 €	-2,559 €
Representation/external catering	-6 €	-106 €
Registration fees	-1,120 €	-1,543 €
Convention travelling	-2,071 €	-2,962 €
Tropical peatlands	0 €	0 €
Other travelling costs	0 €	0 €
<b>Travelling total</b>	<b>-11,777 €</b>	<b>-20,740 €</b>
Publishing		
Online journal Mires and Peat	0 €	-5,500 €
Proofreading + translations	-1,773 €	-1,372 €
Other publication costs (CC book realised)	-48 €	-6,439 €
Website and email	-1,805 €	-2,002 €
Book scanning	0 €	0 €
<b>Publishing total</b>	<b>-3,626 €</b>	<b>-15,312 €</b>
Other		
Other costs	0 €	-8 €
Project expenses (WUR/PA/Merlin)	-19,130 €	-38,374 €
Conference expenses	-2,017 €	-96 €
Allan Robertson Grants	-1,500 €	-3,500 €
Marketing / Communications	-1,220 €	-438 €
Membership fees	-210 €	-129 €
<b>Others total</b>	<b>-24,077 €</b>	<b>-42,545 €</b>
Financial		
Credit losses	-2,544 €	-8,849 €
Depreciations	-54 €	-71 €
Banking fees	-1,153 €	-1,337 €
Webshop/credit card fees	-716 €	-680 €
Interest expenses	-2 €	-5 €
Other financial expenses	-117 €	-73 €
<b>Financial total</b>	<b>-4,585 €</b>	<b>-11,015 €</b>
<b>EXPENSES TOTAL</b>	<b>-174,834 €</b>	<b>-263,203 €</b>
<b>SURPLUS/DEFICIT FOR THE FINANCIAL YEAR</b>	<b>11,007 €</b>	<b>-19,638 €</b>

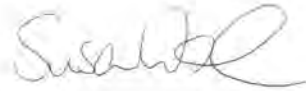
1074181-4

## Signatures

31.3.2026



[Hannu Salo \(Apr 13, 2026 13:47:17 GMT+3\)](#)



Hannu Salo

Susann Warnecke

President

Managing Director



[Ilze Ozola \(Apr 27, 2026 15:59:06 GMT+3\)](#)



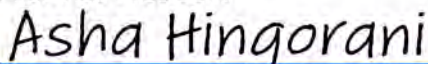
[Anna-Helena Purre \(Apr 13, 2026 14:19:59 GMT+3\)](#)

Ilze Ozola

Anna-Helena Purre

First Vice President

Second Vice President



[Asha Hingorani \(Apr 13, 2026 10:42:38 EDT\)](#)

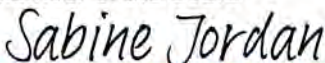


Asha Hingorani

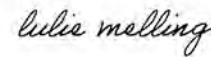
Bernd Hofer

Member of the Board

Member of the Board



[Sabine Jordan \(Apr 13, 2026 18:11:30 GMT+2\)](#)

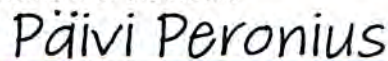


Sabine Jordan

Lulie Melling

Member of the Board

Member of the Board



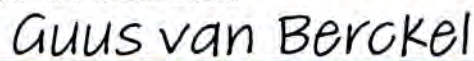
[Päivi Peronius \(Apr 16, 2026 09:11:22 GMT+3\)](#)

Päivi Peronius

Paddy Rowland

Member of the Board

Member of the Board



[Guus van Berckel \(Apr 22, 2026 20:50:28 GMT+2\)](#)



Guus van Berckel

Meng Wang

Member of the Board

Member of the Board

## Auditor's note

Our auditor's report has been issued today

Mikkeli at the date of digital signature



---

Auditor Mrs. Jenni Kovanen , authorized public accountant

1074181-4

## List of accounting books and materials

### List of accounting books, receipts and records and storage methods

#### Financial Statements

Financial Statements	Digital archive
Balance sheet specifications	Digital archive

#### Chart of accounts and balances

Account-specific income statement	Digital archive
Account-specific balance sheet	Digital archive
Chart of accounts	Digital archive

#### Accounting books

Journal	Digital archive
General ledger	Digital archive
Accounts receivable	Digital archive
Accounts payable	Digital archive
Wages accounting	Digital archive
Cash book	Digital archive
Stock accountings	Digital archive
Personal ledger	Digital archive

#### Receipts

Cash vouchers	Digital archive
Bank statements	Digital archive
Sales invoices	Digital archive
Purchase invoices	Digital archive
Salaries	Digital archive
Memo vouchers	Digital archive
Tax returns for self-assessed taxes	Digital archive
Note vouchers	Digital archive

All material is stored digitally.

## **AUDITOR'S REPORT (Translation of the Finnish original)**

To the Annual General Meeting of International Peatland Society

### **Report on the Audit of the Financial Statements**

#### **Opinion**

I have audited the financial statements of International Peatland Society (business identity code 1074181-4) for the year ended 31 December 2025. The financial statements comprise the balance sheet, income statement and notes.

In my opinion, the financial statements give a true and fair view of the society's financial performance and financial position in accordance with the laws and regulations governing the preparation of financial statements in Finland and comply with statutory requirements.

#### **Basis for Opinion**

I conducted my audit in accordance with good auditing practice in Finland. My responsibilities under good auditing practice are further described in the Auditor's Responsibilities for the Audit of Financial Statements section of my report. I am independent of the society in accordance with the ethical requirements that are applicable in Finland and are relevant to my audit, and I have fulfilled my other ethical responsibilities in accordance with these requirements. I believe that the audit evidence I have obtained is sufficient and appropriate to provide a basis for my opinion.

#### **Responsibilities of the Board of Directors (Executive Board)**

The Board of Directors is responsible for the preparation of financial statements that give a true and fair view in accordance with the laws and regulations governing the preparation of financial statements in Finland and comply with statutory requirements. The Board of Directors is also responsible for such internal control as they determine is necessary to enable the preparation of financial statements that are free from material misstatement, whether due to fraud or error.

In preparing the financial statements, the Board of Directors is responsible for assessing the society's ability to continue as a going concern, disclosing, as applicable, matters relating to going concern and using the going concern basis of accounting. The financial statements are prepared using the going concern basis of accounting unless there is an intention to liquidate the society or cease operations, or there is no realistic alternative but to do so.

### Auditor's Responsibilities for the Audit of the Financial Statements

My objectives are to obtain reasonable assurance about whether the financial statements as a whole are free from material misstatement, whether due to fraud or error, and to issue an auditor's report that includes my opinion. Reasonable assurance is a high level of assurance but is not a guarantee that an audit conducted in accordance with good auditing practice will always detect a material misstatement when it exists. Misstatements can arise from fraud or error and are considered material if, individually or in the aggregate, they could reasonably be expected to influence the economic decisions of users taken on the basis of the financial statements.

As part of an audit in accordance with good auditing practice, I exercise professional judgment and maintain professional skepticism throughout the audit. I also:

- Identify and assess the risks of material misstatement of the financial statements, whether due to fraud or error, design and perform audit procedures responsive to those risks, and obtain audit evidence that is sufficient and appropriate to provide a basis for my opinion. The risk of not detecting a material misstatement resulting from fraud is higher than for one resulting from error, as fraud may involve collusion, forgery, intentional omissions, misrepresentations, or the override of internal control.
- Obtain an understanding of internal control relevant to the audit in order to design audit procedures that are appropriate in the circumstances, but not for the purpose of expressing an opinion on the effectiveness of the society's internal control.
- Evaluate the appropriateness of accounting policies used and the reasonableness of accounting estimates and related disclosures made by management.
- Conclude on the appropriateness of the Board of Directors' use of the going concern basis of accounting and based on the audit evidence obtained, whether a material uncertainty exists related to events or conditions that may cast significant doubt on the society's ability to continue as a going concern. If I conclude that a material uncertainty exists, I am required to draw attention in my auditor's report to the related disclosures in the financial statements or, if such disclosures are inadequate, to modify my opinion. My conclusions are based on the audit evidence obtained up to the date of my auditor's report. However, future events or conditions may cause the society to cease to continue as a going concern.
- Evaluate the overall presentation, structure and content of the financial statements, including the disclosures, and whether the financial statements represent the underlying transactions and events so that the financial statements give a true and fair view.

I communicate with those charged with governance regarding, among other matters, the planned scope and timing of the audit and significant audit findings, including any significant deficiencies in internal control that I identify during my audit.

## Other reporting requirements

### Other information

The Board of Directors is responsible for the other information. The other information comprises the report of the Board of Directors. My opinion on the financial statements does not cover the other information.

In connection with my audit of the financial statements, my responsibility is to read the other information and, in doing so, consider whether the other information is materially inconsistent with the financial statements or my knowledge obtained in the audit, or otherwise appears to be materially misstated. My responsibility also includes considering whether the report of the Board of Directors has been prepared in compliance with the applicable provisions.

In my opinion, the information in the report of the Board of Directors is consistent with the information in the financial statements and the report of the Board of Directors has been prepared in compliance with the applicable provisions.

If, based on the work I have performed, I conclude that there is a material misstatement of the report of the Board of Directors, I am required to report that fact. I have nothing to report in this regard.

Mikkeli, 29. April 2026



Jenni Kovanen  
ÅPA

# International Peatland Conference 2026



## Showcasing Peatland Opportunities Today

*Exploring Agriculture, Peatland Restoration  
& Renewable Energy Transitions*

Location: Midlands of Ireland  
Date: June 8th – 11th

# Welcome to the Annual Convention 2026 in Ireland!

[www.peatlandsgathering.com](http://www.peatlandsgathering.com)